

C3orf38 Polyclonal Antibody

Purified Rabbit Polyclonal Antibody (Pab)

Catalog # AP55852

Product Information

Application	WB, IHC-P, IHC-F, IF, ICC
Primary Accession	Q5JPI3
Reactivity	Rat, Dog
Host	Rabbit
Clonality	Polyclonal
Calculated MW	37541
Physical State	Liquid
Immunogen	KLH conjugated synthetic peptide derived from human C3orf38
Epitope Specificity	21-120/329
Isotype	IgG
Purity	affinity purified by Protein A
Buffer	0.01M TBS (pH7.4) with 1% BSA, 0.02% Proclin300 and 50% Glycerol.
Important Note	This product as supplied is intended for research use only, not for use in human, therapeutic or diagnostic applications.
Background Descriptions	Chromosome 3 is made up of about 214 million bases encoding over 1,100 genes. Notably, there is a chemokine receptor gene cluster and a variety of human cancer related loci on chromosome 3. Particular regions of the chromosome 3 short arm are deleted in many types of cancer cells. Key tumor suppressing genes on chromosome 3 encode apoptosis mediator RASSF1, cell migration regulator HYAL1 and angiogenesis suppressor SEMA3B. Marfan Syndrome, porphyria, von Hippel-Lindau syndrome, osteogenesis imperfecta and Charcot-Marie-Tooth Disease are a few of the numerous genetic diseases associated with chromosome 3. The C3orf38 gene product has been provisionally designated C3orf38 pending further characterization.

Additional Information

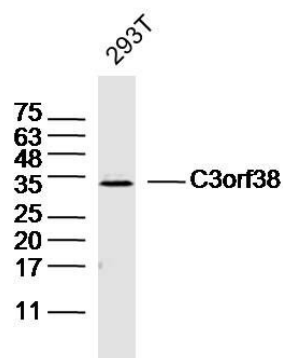
Gene ID	285237
Other Names	Uncharacterized protein C3orf38, C3orf38
Dilution	WB=1:500-2000,IHC-P=1:100-500,IHC-F=1:100-500,ICC=1:100-500,IF=1:100-500
Format	0.01M TBS(pH7.4) with 1% BSA, 0.09% (W/V) sodium azide and 50% Glyce
Storage	Store at -20 °C for one year. Avoid repeated freeze/thaw cycles. When reconstituted in sterile pH 7.4 0.01M PBS or diluent of antibody the antibody is stable for at least two weeks at 2-4 °C.

Protein Information

Name C3orf38

Function May be involved in apoptosis regulation.

Images



Sample: 293T(human) Cell Lysate at 40 ug
Primary: Anti-C3orf38(AP55852) at 1/300 dilution
Secondary: IRDye800CW Goat Anti-Rabbit IgG at 1/20000 dilution
Predicted band size: 38kD
Observed band size: 33kD

Please note: All products are 'FOR RESEARCH USE ONLY. NOT FOR USE IN DIAGNOSTIC OR THERAPEUTIC PROCEDURES'.