

# C5orf22 Polyclonal Antibody

Purified Rabbit Polyclonal Antibody (Pab)

Catalog # AP55866

## Product Information

---

<b>Application</b>	WB, IHC-P, IHC-F, IF, ICC, E
<b>Primary Accession</b>	<a href="#">Q49AR2</a>
<b>Reactivity</b>	Rat, Dog
<b>Host</b>	Rabbit
<b>Clonality</b>	Polyclonal
<b>Calculated MW</b>	49967
<b>Physical State</b>	Liquid
<b>Immunogen</b>	KLH conjugated synthetic peptide derived from human C5orf22
<b>Epitope Specificity</b>	301-400/442
<b>Isotype</b>	IgG
<b>Purity</b>	affinity purified by Protein A
<b>Buffer</b>	0.01M TBS (pH7.4) with 1% BSA, 0.02% Proclin300 and 50% Glycerol.
<b>SIMILARITY</b>	Belongs to the UPF0489 family.
<b>Important Note</b>	This product as supplied is intended for research use only, not for use in human, therapeutic or diagnostic applications.
<b>Background Descriptions</b>	With 181 million base pairs encoding around 1,000 genes, chromosome 5 is about 6% of human genomic DNA. It is associated with Cockayne syndrome through the ERCC8 gene and familial adenomatous polyposis through the adenomatous polyposis coli (APC) tumor suppressor gene. Treacher Collins syndrome is also chromosome 5 associated and is caused by insertions or deletions within the TCOF1 gene. Deletion of the p arm of chromosome 5 leads to Cri du chat syndrome. Deletion of 5q or chromosome 5 altogether is common in therapy-related acute myelogenous leukemias and myelodysplastic syndrome. The C5orf22 gene product has been provisionally designated C5orf22 pending further characterization.

## Additional Information

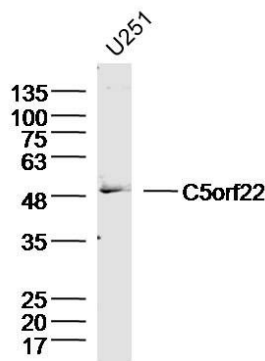
---

<b>Gene ID</b>	55322
<b>Other Names</b>	UPF0489 protein C5orf22, C5orf22
<b>Dilution</b>	WB=1:500-2000,IHC-P=1:100-500,IHC-F=1:100-500,ICC=1:100-500,IF=1:100-500,ELISA=1:5000-10000
<b>Format</b>	0.01M TBS(pH7.4) with 1% BSA, 0.09% (W/V) sodium azide and 50% Glyce
<b>Storage</b>	Store at -20 °C for one year. Avoid repeated freeze/thaw cycles. When reconstituted in sterile pH 7.4 0.01M PBS or diluent of antibody the antibody is stable for at least two weeks at 2-4 °C.

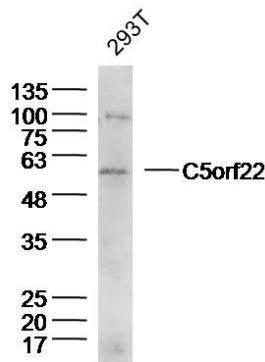
# Protein Information

Name C5orf22

# Images



Sample:U251(human) Cell Lysate at 40 ug  
Primary: Anti-C5orf22(AP55866)at 1/300 dilution  
Secondary:IRDye800CW Goat Anti-Rabbit IgG at 1/20000 dilution  
Predicted band size: 50kD  
Observed band size: 50kD



Sample:293T(huamn) Cell Lysate at 40 ug  
Primary: Anti-C5orf22(AP55866)at 1/300 dilution  
Secondary:IRDye800CW Goat Anti-Rabbit IgG at 1/20000 dilution  
Predicted band size: 50kD  
Observed band size: 55kD

Please note: All products are 'FOR RESEARCH USE ONLY. NOT FOR USE IN DIAGNOSTIC OR THERAPEUTIC PROCEDURES'.