

KCT2 Antibody (Center)

Affinity Purified Rabbit Polyclonal Antibody (Pab)

Catalog # AP5586c

Product Information

Application	WB, FC, E
Primary Accession	Q8NC54
Other Accession	NP_064584.1
Reactivity	Human, Mouse
Host	Rabbit
Clonality	Polyclonal
Isotype	Rabbit IgG
Clone Names	RB26981
Calculated MW	29235
Antigen Region	123-150

Additional Information

Gene ID	56951
Other Names	Keratinocyte-associated transmembrane protein 2, KCT2, C5orf15
Target/Specificity	This KCT2 antibody is generated from rabbits immunized with a KLH conjugated synthetic peptide between 123-150 amino acids from the Central region of human KCT2.
Dilution	WB~~1:1000 FC~~1:10~50 E~~Use at an assay dependent concentration.
Format	Purified polyclonal antibody supplied in PBS with 0.09% (W/V) sodium azide. This antibody is purified through a protein A column, followed by peptide affinity purification.
Storage	Maintain refrigerated at 2-8°C for up to 2 weeks. For long term storage store at -20°C in small aliquots to prevent freeze-thaw cycles.
Precautions	KCT2 Antibody (Center) is for research use only and not for use in diagnostic or therapeutic procedures.

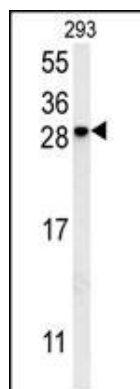
Protein Information

Name	KCT2
Synonyms	C5orf15
Cellular Location	Membrane; Single-pass type I membrane protein

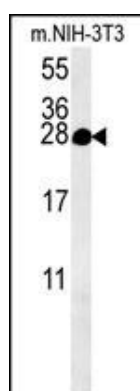
References

Anney, R.J., et al. Am. J. Med. Genet. B Neuropsychiatr. Genet. 147B (8), 1369-1378 (2008) :
Bonkobara, M., et al. Br. J. Dermatol. 148(4):654-664(2003)

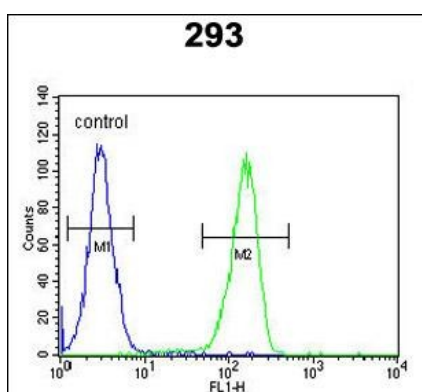
Images



KCT2 Antibody (Center) (Cat. #AP5586c) western blot analysis in 293 cell line lysates (15ug/lane). This demonstrates the KCT2 antibody detected the KCT2 protein (arrow).



KCT2 Antibody (Center) (Cat. #AP5586c) western blot analysis in mouse NIH-3T3 cell line lysates (15ug/lane). This demonstrates the KCT2 antibody detected the KCT2 protein (arrow).



KCT2 Antibody (Center) (Cat. #AP5586c) flow cytometric analysis of 293 cells (right histogram) compared to a negative control cell (left histogram). FITC-conjugated goat-anti-rabbit secondary antibodies were used for the analysis.

Please note: All products are 'FOR RESEARCH USE ONLY. NOT FOR USE IN DIAGNOSTIC OR THERAPEUTIC PROCEDURES'.