

C6orf146 Polyclonal Antibody

Purified Rabbit Polyclonal Antibody (Pab)

Catalog # AP55878

Product Information

Application	WB, IHC-P, IHC-F, IF, ICC, E
Primary Accession	Q8IXS0
Reactivity	Human
Host	Rabbit
Clonality	Polyclonal
Calculated MW	57420
Physical State	Liquid
Immunogen	KLH conjugated synthetic peptide derived from human C6orf146
Epitope Specificity	301-400/508
Isotype	IgG
Purity	affinity purified by Protein A

Buffer 0.01M TBS (pH7.4) with 1% BSA, 0.02% Proclin300 and 50% Glycerol.

SIMILARITY Belongs to the FAM217 family.

Important Note This product as supplied is intended for research use only, not for use in human, therapeutic or diagnostic applications.

Background Descriptions Making up nearly 6% of the human genome, chromosome 6 contains around 1,200 genes within 170 million base pairs of sequence. Deletion of a portion of the q arm of chromosome 6 is associated with early onset intestinal cancer suggesting the presence of a cancer susceptibility locus. Porphyria cutanea tarda is associated with chromosome 6 through the HFE gene which, when mutated, predisposes an individual to developing this porphyria. Notably, the PARK2 gene, which is associated with Parkinson's disease, and the genes encoding the major histocompatibility complex proteins, which are key molecular components of the immune system and determine predisposition to rheumatic diseases, are also located on chromosome 6. Stickler syndrome, 21-hydroxylase deficiency and maple syrup urine disease are also associated with genes on chromosome 6. A bipolar disorder susceptibility locus has been identified on the q arm of chromosome 6. The C6orf146 gene product has been provisionally designated C6orf146 pending further characterization.

Additional Information

Gene ID	222826
Other Names	Protein FAM217A, FAM217A, C6orf146
Dilution	WB=1:500-2000,IHC-P=1:100-500,IHC-F=1:100-500,ICC=1:100-500,IF=1:100-500,ELISA=1:5000-10000
Format	0.01M TBS(pH7.4) with 1% BSA, 0.09% (W/V) sodium azide and 50% Glyce

Storage

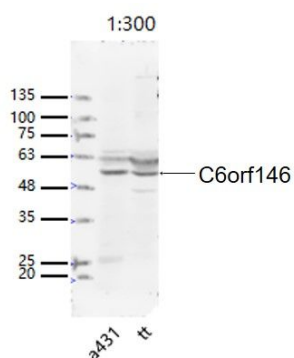
Store at -20 °C for one year. Avoid repeated freeze/thaw cycles. When reconstituted in sterile pH 7.4 0.01M PBS or diluent of antibody the antibody is stable for at least two weeks at 2-4 °C.

Protein Information

Name FAM217A

Synonyms C6orf146

Images



Sample:

A549(Human) Cell Lysate at 30 ug

TT(Human) Cell Lysate at 30 ug

Primary: Anti-C6orf146 (AP55878) at 1/300 dilution

Secondary: IRDye800CW Goat Anti-Rabbit IgG at 1/20000 dilution

Predicted band size: 55 kD

Observed band size: 55 kD

Please note: All products are 'FOR RESEARCH USE ONLY. NOT FOR USE IN DIAGNOSTIC OR THERAPEUTIC PROCEDURES'.