

# C8orf72 Polyclonal Antibody

Purified Rabbit Polyclonal Antibody (Pab)

Catalog # AP55931

## Product Information

---

<b>Application</b>	WB, IHC-P, IHC-F, IF, ICC, E
<b>Primary Accession</b>	<a href="#">Q8TC76</a>
<b>Reactivity</b>	Rat, Pig, Dog, Bovine
<b>Host</b>	Rabbit
<b>Clonality</b>	Polyclonal
<b>Calculated MW</b>	40728
<b>Physical State</b>	Liquid
<b>Immunogen</b>	KLH conjugated synthetic peptide derived from human C8orf72
<b>Epitope Specificity</b>	1-100/370
<b>Isotype</b>	IgG
<b>Purity</b>	affinity purified by Protein A
<b>Buffer</b>	0.01M TBS (pH7.4) with 1% BSA, 0.02% Proclin300 and 50% Glycerol.
<b>SUBCELLULAR LOCATION</b>	Cytoplasm. Cytoplasm, cytoskeleton, centrosome.
<b>Important Note</b>	This product as supplied is intended for research use only, not for use in human, therapeutic or diagnostic applications.
<b>Background Descriptions</b>	FAM110B is a 370 amino acid protein, which contains several motifs that are conserved among FAM110 family members and a proline-rich region through which it probably binds proteins. Localized to the nucleus where they associate with centrosomes, FAM110A, FAM110B and FAM110C accumulate at the spindle poles during mitosis. Expression of FAM110B and FAM110C impairs cell cycle progression through G1 phase. FAM110B is expressed in testis, thyroid and spleen and is found at lower levels in ovary, adrenal gland, stomach, trachea, intestine, lymph node, spinal cord and prostate. The gene encoding FAM110B maps to human chromosome 8, which is made up of nearly 146 million bases and encodes about 800 genes. Chromosome 8 is also associated with Pfeiffer syndrome, congenital hypothyroidism and Waardenburg syndrome.

## Additional Information

---

<b>Gene ID</b>	90362
<b>Other Names</b>	Protein FAM110B, FAM110B, C8orf72
<b>Target/Specificity</b>	Detected in thyroid, spleen and testis, and at lower levels in stomach, spinal cord, lymph node, trachea, adrenal gland, prostate, ovary and intestine. [SIMILARITY] Belongs to the FAM110 family.
<b>Dilution</b>	WB=1:500-2000,IHC-P=1:100-500,IHC-F=1:100-500,ICC=1:100-500,IF=1:100-500,ELISA=1:5000-10000

<b>Format</b>	0.01M TBS(pH7.4) with 1% BSA, 0.09% (W/V) sodium azide and 50% Glycerol
<b>Storage</b>	Store at -20 °C for one year. Avoid repeated freeze/thaw cycles. When reconstituted in sterile pH 7.4 0.01M PBS or diluent of antibody the antibody is stable for at least two weeks at 2-4 °C.

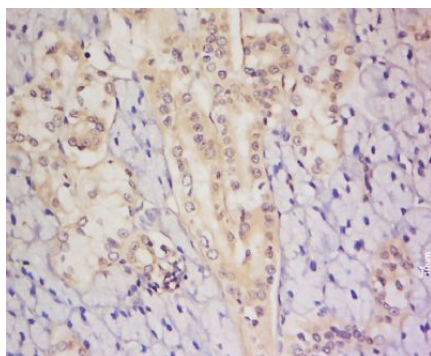
## Protein Information

---

<b>Name</b>	FAM110B
<b>Synonyms</b>	C8orf72
<b>Function</b>	May be involved in tumor progression.
<b>Cellular Location</b>	Cytoplasm. Cytoplasm, cytoskeleton, microtubule organizing center, centrosome
<b>Tissue Location</b>	Detected in thyroid, spleen and testis, and at lower levels in stomach, spinal cord, lymph node, trachea, adrenal gland, prostate, ovary and intestine.

## Images

---



Tissue/cell: human thyroid tissue; 4%  
 Paraformaldehyde-fixed and paraffin-embedded;  
 Antigen retrieval: citrate buffer ( 0.01M, pH 6.0 ), Boiling  
 bathing for 15min; Block endogenous peroxidase by 3%  
 Hydrogen peroxide for 30min; Blocking buffer (normal  
 goat serum,C-0005) at 37°C for 20 min;  
 Incubation: Anti- C8orf72 Polyclonal Antibody,  
 Unconjugated(AP55931) 1:200, overnight at 4°C, followed  
 by conjugation to the secondary antibody(SP-0023) and  
 DAB(C-0010) staining

Please note: All products are 'FOR RESEARCH USE ONLY. NOT FOR USE IN DIAGNOSTIC OR THERAPEUTIC PROCEDURES'.