

HERC6 Polyclonal Antibody

Purified Rabbit Polyclonal Antibody (Pab)

Catalog # AP56009

Product Information

Application	WB, IHC-P, IHC-F, IF, ICC, E
Primary Accession	Q8IVU3
Reactivity	Rat, Pig
Host	Rabbit
Clonality	Polyclonal
Calculated MW	115126
Physical State	Liquid
Immunogen	KLH conjugated synthetic peptide derived from human HERC6
Epitope Specificity	751-850/1022
Isotype	IgG
Purity	affinity purified by Protein A
Buffer	0.01M TBS (pH7.4) with 1% BSA, 0.02% Proclin300 and 50% Glycerol.
SUBCELLULAR LOCATION	Cytoplasm, cytosol.
SIMILARITY	Contains 1 HECT (E6AP-type E3 ubiquitin-protein ligase) domain.Contains 5 RCC1 repeats.
Important Note	This product as supplied is intended for research use only, not for use in human, therapeutic or diagnostic applications.

Additional Information

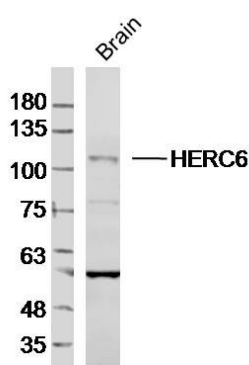
Gene ID	55008
Other Names	Probable E3 ubiquitin-protein ligase HERC6, 2.3.2.26, HECT domain and RCC1-like domain-containing protein 6, HECT-type E3 ubiquitin transferase HERC6, HERC6
Target/Specificity	Detected in brain, heart, placenta and testis.
Dilution	WB=1:500-2000,IHC-P=1:100-500,IHC-F=1:100-500,ICC=1:100-500,IF=1:100-500,ELISA=1:5000-10000
Format	0.01M TBS(pH7.4) with 1% BSA, 0.09% (W/V) sodium azide and 50% Glyce
Storage	Store at -20 °C for one year. Avoid repeated freeze/thaw cycles. When reconstituted in sterile pH 7.4 0.01M PBS or diluent of antibody the antibody is stable for at least two weeks at 2-4 °C.

Protein Information

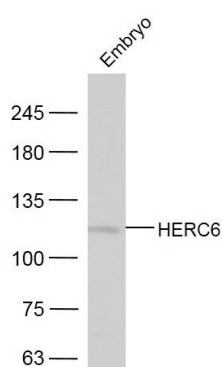
Name	HERC6
-------------	-------

Function	E3 ubiquitin-protein ligase which accepts ubiquitin from an E2 ubiquitin-conjugating enzyme in the form of a thioester and then directly transfers the ubiquitin to targeted substrates.
Cellular Location	Cytoplasm, cytosol.
Tissue Location	Detected in brain, heart, placenta and testis.

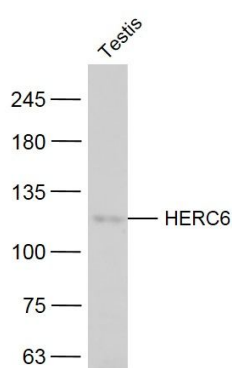
Images



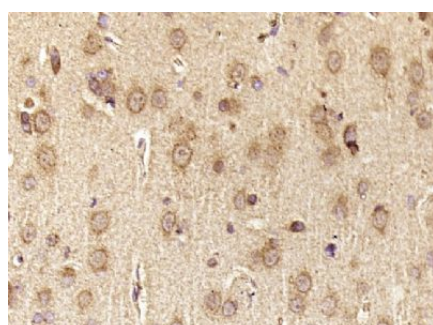
Sample: Brain (Mouse) Lysate at 40 ug
 Primary: Anti-HERC6 (AP56009) at 1/300 dilution
 Secondary: IRDye800CW Goat Anti-Rabbit IgG at 1/20000 dilution
 Predicted band size: 115kD
 Observed band size: 115kD



Sample:
 Embryo (Mouse) Lysate at 40 ug
 Primary: Anti-HERC6 (AP56009) at 1/300 dilution
 Secondary: IRDye800CW Goat Anti-Rabbit IgG at 1/20000 dilution
 Predicted band size: 115 kD
 Observed band size: 115 kD



Sample:
 Testis (Mouse) Lysate at 40 ug
 Primary: Anti-HERC6 (AP56009) at 1/300 dilution
 Secondary: IRDye800CW Goat Anti-Rabbit IgG at 1/20000 dilution
 Predicted band size: 115 kD
 Observed band size: 115 kD



Paraformaldehyde-fixed, paraffin embedded (Rat brain);
 Antigen retrieval by boiling in sodium citrate buffer (pH6.0) for 15min; Block endogenous peroxidase by 3% hydrogen peroxide for 20 minutes; Blocking buffer (normal goat serum) at 37°C for 30min; Antibody incubation with (HERC6) Polyclonal Antibody, Unconjugated (AP56009) at 1:400 overnight at 4°C, followed by operating according to SP Kit(Rabbit) (sp-0023) instructions and DAB staining.

Please note: All products are 'FOR RESEARCH USE ONLY. NOT FOR USE IN DIAGNOSTIC OR THERAPEUTIC PROCEDURES'.