

FAM5C Rabbit pAb

FAM5C Rabbit pAb

Catalog # AP56061

Product Information

Application	IHC-P, IHC-F, IF
Primary Accession	Q76B58
Reactivity	Rat
Predicted	Human, Mouse, Chicken, Dog, Pig, Rabbit, Sheep
Host	Rabbit
Clonality	Polyclonal
Calculated MW	88445
Physical State	Liquid
Immunogen	KLH conjugated synthetic peptide derived from human FAM5C
Epitope Specificity	681-766/766
Isotype	IgG
Purity	affinity purified by Protein A
Buffer	0.01M TBS (pH7.4) with 1% BSA, 0.02% Proclin300 and 50% Glycerol.
SUBCELLULAR LOCATION	Secreted
SIMILARITY	Belongs to the BRINP family. Contains 1 MACPF domain.
Important Note	This product as supplied is intended for research use only, not for use in human, therapeutic or diagnostic applications.
Background Descriptions	FAM5C belongs to the FAM5 family.

Additional Information

Gene ID	339479
Other Names	BMP/retinoic acid-inducible neural-specific protein 3, DBCCR1-like protein 1, BRINP3, DBCCR1L, DBCCR1L1, FAM5C
Target/Specificity	Strongly expressed in oral keratinocytes compared to the weak expression in tongue squamous cell carcinoma (SCC). Expressed in endothelial and aortic smooth muscle cells. Overexpressed in gonadotropinomas compared to normal pituitary tissues.
Dilution	IHC-P=1:100-500,IHC-F=1:100-500,IF=1:100-500
Storage	Store at -20 °C for one year. Avoid repeated freeze/thaw cycles. When reconstituted in sterile pH 7.4 0.01M PBS or diluent of antibody the antibody is stable for at least two weeks at 2-4 °C.

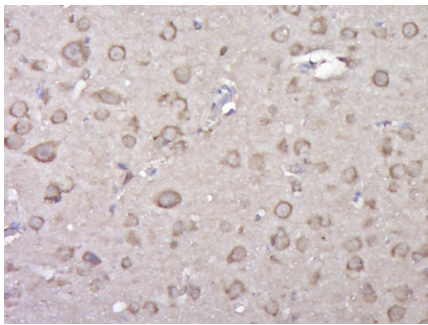
Protein Information

Name	BRINP3
Synonyms	DBCCR1L, DBCCR1L1, FAM5C
Function	Inhibits neuronal cell proliferation by negative regulation of the cell cycle transition. Promotes pituitary gonadotrope cell proliferation, migration and invasion, when overexpressed. May play a role in cell pituitary tumor development.
Cellular Location	Secreted. Mitochondrion
Tissue Location	Strongly expressed in oral keratinocytes compared to the weak expression in tongue squamous cell carcinoma (SCC) Expressed in endothelial and aortic smooth muscle cells. Overexpressed in gonadotropinomas compared to normal pituitary tissues

Background

FAM5C belongs to the FAM5 family.

Images



Paraformaldehyde-fixed, paraffin embedded (Rat brain); Antigen retrieval by boiling in sodium citrate buffer (pH6.0) for 15min; Block endogenous peroxidase by 3% hydrogen peroxide for 20 minutes; Blocking buffer (normal goat serum) at 37°C for 30min; Antibody incubation with (FAM5C) Polyclonal Antibody, Unconjugated (AP56061) at 1:400 overnight at 4°C, followed by operating according to SP Kit(Rabbit) (sp-0023) instructions and DAB staining.

Please note: All products are 'FOR RESEARCH USE ONLY. NOT FOR USE IN DIAGNOSTIC OR THERAPEUTIC PROCEDURES'.