

RUFY4/FLJ46536 Rabbit pAb

RUFY4/FLJ46536 Rabbit pAb

Catalog # AP56149

Product Information

Application	IHC-P, IHC-F, IF
Primary Accession	Q6ZNE9
Reactivity	Mouse, Rat
Predicted	Human, Dog, Pig, Horse, Rabbit
Host	Rabbit
Clonality	Polyclonal
Calculated MW	64350
Physical State	Liquid
Immunogen	KLH conjugated synthetic peptide derived from human FLJ46536
Epitope Specificity	131-230/372
Isotype	IgG
Purity	affinity purified by Protein A
Buffer	0.01M TBS (pH7.4) with 1% BSA, 0.02% Proclin300 and 50% Glycerol.
Important Note	This product as supplied is intended for research use only, not for use in human, therapeutic or diagnostic applications.
Background Descriptions	Contains 1 FYVE-type zinc finger and 1 RUN domain.

Additional Information

Gene ID	285180
Other Names	RUN and FYVE domain-containing protein 4, RUFY4
Dilution	IHC-P=1:100-500,IHC-F=1:100-500,IF=1:100-500
Storage	Store at -20 °C for one year. Avoid repeated freeze/thaw cycles. When reconstituted in sterile pH 7.4 0.01M PBS or diluent of antibody the antibody is stable for at least two weeks at 2-4 °C.

Protein Information

Name	RUFY4
Function	ARL8 effector that promotes the coupling of endolysosomes to dynein-dynactin for retrograde transport along microtubules. Acts by binding both GTP-bound ARL8 and dynein-dynactin. In nonneuronal cells, promotes concentration of endolysosomes in the juxtanuclear area. In hippocampal neurons, drives retrograde transport of endolysosomes from the axon to the soma (PubMed: 35314674). Positive regulator of macroautophagy in dendritic

cells. Increases autophagic flux, probably by stimulating both autophagosome formation and facilitating tethering with lysosomes. Binds to phosphatidylinositol 3-phosphate (PtdIns3P) through its FYVE-type zinc finger (PubMed:[26416964](#)). Positive regulator of osteoclast bone-resorbing activity, possibly by promoting late endosome-lysosome fusion by acting as an adapter protein between RAB7A on late endosomes and LAMP2 on primary lysosomes (By similarity).

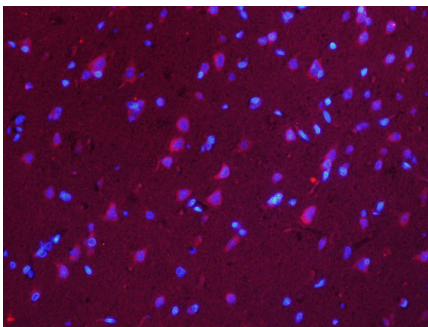
Cellular Location

Cytoplasmic vesicle, autophagosome. Lysosome Note=In the presence of ARL8, recruited to endolysosomes

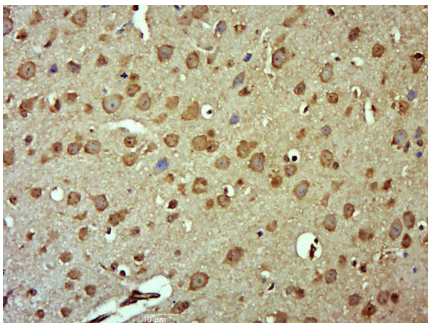
Background

Contains 1 FYVE-type zinc finger and 1 RUN domain.

Images



Paraformaldehyde-fixed, paraffin embedded (Rat brain); Antigen retrieval by boiling in sodium citrate buffer (pH6.0) for 15min; Block endogenous peroxidase by 3% hydrogen peroxide for 20 minutes; Blocking buffer (normal goat serum) at 37°C for 30min; Antibody incubation with (RUFY4/FLJ46536) Polyclonal Antibody, Unconjugated (AP56149) at 1:400 overnight at 4°C, followed by a conjugated secondary antibody (AP56149-cy3) for 90 minutes, and DAPI for nuclei staining.



Paraformaldehyde-fixed, paraffin embedded (Mouse brain); Antigen retrieval by boiling in sodium citrate buffer (pH6.0) for 15min; Block endogenous peroxidase by 3% hydrogen peroxide for 20 minutes; Blocking buffer (normal goat serum) at 37°C for 30min; Antibody incubation with (RUFY4) Polyclonal Antibody, Unconjugated (AP56149) at 1:500 overnight at 4°C, followed by a conjugated secondary (sp-0023) for 20 minutes and DAB staining.

Please note: All products are 'FOR RESEARCH USE ONLY. NOT FOR USE IN DIAGNOSTIC OR THERAPEUTIC PROCEDURES'.