

SC31B Antibody (C-term)

Affinity Purified Rabbit Polyclonal Antibody (Pab)

Catalog # AP5617b

Product Information

| | |
|--------------------------|-----------------------------|
| Application | WB, FC, E |
| Primary Accession | Q9NQW1 |
| Other Accession | NP_056305.1 |
| Reactivity | Human |
| Host | Rabbit |
| Clonality | Polyclonal |
| Isotype | Rabbit IgG |
| Clone Names | RB27130 |
| Calculated MW | 128697 |
| Antigen Region | 1076-1104 |

Additional Information

| | |
|---------------------------|--|
| Gene ID | 25956 |
| Other Names | Protein transport protein Sec31B, SEC31-like protein 2, SEC31-related protein B, SEC31B-1, SEC31B, SEC31L2 |
| Target/Specificity | This SC31B antibody is generated from rabbits immunized with a KLH conjugated synthetic peptide between 1076-1104 amino acids from the C-terminal region of human SC31B. |
| Dilution | WB~~1:1000 FC~~1:10~50 E~~Use at an assay dependent concentration. |
| Format | Purified polyclonal antibody supplied in PBS with 0.09% (W/V) sodium azide. This antibody is purified through a protein A column, followed by peptide affinity purification. |
| Storage | Maintain refrigerated at 2-8°C for up to 2 weeks. For long term storage store at -20°C in small aliquots to prevent freeze-thaw cycles. |
| Precautions | SC31B Antibody (C-term) is for research use only and not for use in diagnostic or therapeutic procedures. |

Protein Information

| | |
|-----------------|--|
| Name | SEC31B |
| Synonyms | SEC31L2 |
| Function | As a component of the coat protein complex II (COPII), may function in |

vesicle budding and cargo export from the endoplasmic reticulum.

Cellular Location

Cytoplasm. Cytoplasmic vesicle, COPII-coated vesicle membrane; Peripheral membrane protein; Cytoplasmic side. Endoplasmic reticulum membrane; Peripheral membrane protein

Tissue Location

Ubiquitously expressed at low levels with specific expression in thymus and testis. Expressed in testis by Sertoli cells, Leydig cells and spermatogonia and in cerebellum more prominently by Purkinje and granular cells (at protein level)

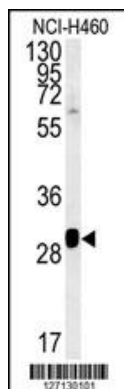
Background

This gene encodes a protein of unknown function. The protein has moderate similarity to rat VAP1 protein which is an endosomal membrane-associated protein, containing a putative Ca²⁺/calmodulin-dependent kinase II phosphorylation site.

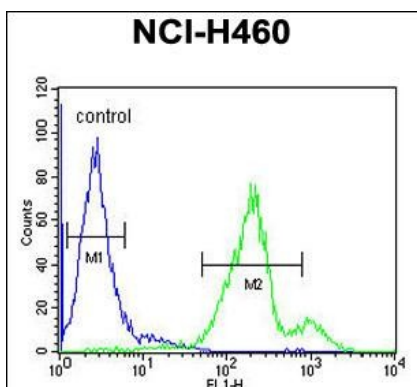
References

Stankewich, M.C., et al. J. Cell. Sci. 119 (PT 5), 958-969 (2006) :
Grupe, A., et al. Am. J. Hum. Genet. 78(1):78-88(2006)
Tang, B.L., et al. J. Biol. Chem. 275(18):13597-13604(2000)

Images



SC31B Antibody (C-term) (Cat. #AP5617b) western blot analysis in NCI-H460 cell line lysates (15ug/lane). This demonstrates the SC31B antibody detected the SC31B protein (arrow).



SC31B Antibody (C-term) (Cat. #AP5617b) flow cytometric analysis of NCI-H460 cells (right histogram) compared to a negative control cell (left histogram). FITC-conjugated goat-anti-rabbit secondary antibodies were used for the analysis.

Please note: All products are 'FOR RESEARCH USE ONLY. NOT FOR USE IN DIAGNOSTIC OR THERAPEUTIC PROCEDURES'.