

GRHL1 Rabbit pAb

GRHL1 Rabbit pAb
Catalog # AP56210

Product Information

Application	IHC-P, IHC-F, IF
Primary Accession	Q9NZI5
Reactivity	Rat
Predicted	Human, Mouse, Dog, Pig, Horse, Rabbit, Sheep
Host	Rabbit
Clonality	Polyclonal
Calculated MW	70113
Physical State	Liquid
Immunogen	KLH conjugated synthetic peptide derived from human GRHL1
Epitope Specificity	151-250/618
Isotype	IgG
Purity	affinity purified by Protein A
Buffer	0.01M TBS (pH7.4) with 1% BSA, 0.02% Proclin300 and 50% Glycerol.
SUBCELLULAR LOCATION	Nucleus.
SIMILARITY	Belongs to the grh/CP2 family. Grainyhead subfamily.
Important Note	This product as supplied is intended for research use only, not for use in human, therapeutic or diagnostic applications.
Background Descriptions	This gene encodes a member of the grainyhead family of transcription factors. The encoded protein can exist as a homodimer or can form heterodimers with sister-of-mammalian grainyhead or brother-of-mammalian grainyhead. This protein functions as a transcription factor during development. [provided by RefSeq, Jun 2009]

Additional Information

Gene ID	29841
Other Names	Grainyhead-like protein 1 homolog {ECO:0000312 HGNC:HGNC:17923}, Mammalian grainyhead, NH32, Transcription factor CP2-like 2, Transcription factor LBP-32, GRHL1 (HGNC:17923)
Target/Specificity	Isoform 1 is highly expressed in brain, pancreas, tonsil, placenta and kidney. Isoform 2 is highly expressed in brain and liver. Highly expressed in placental JEG-3 cells and at very low levels in non-steroidogenic cells. No expression detected in adrenal NCI-H295A cells.
Dilution	IHC-P=1:100-500,IHC-F=1:100-500,IF=1:100-500
Storage	Store at -20 °C for one year. Avoid repeated freeze/thaw cycles. When reconstituted in sterile pH 7.4 0.01M PBS or diluent of antibody the antibody is stable for at least two weeks at 2-4 °C.

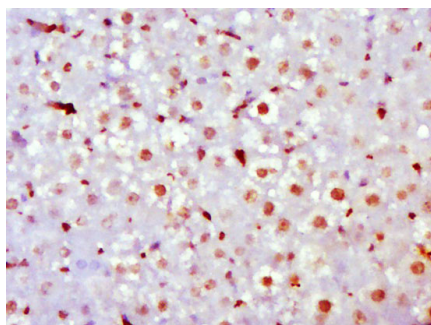
Protein Information

Name	GRHL1 (HGNC:17923)
Function	Transcription factor involved in epithelial development. Binds directly to the consensus DNA sequence 5'-AACCGGTT-3' (PubMed: 12175488 , PubMed: 18288204 , PubMed: 29309642). Important regulator of DSG1 in the context of hair anchorage and epidermal differentiation, participates in the maintenance of the skin barrier. There is no genetic interaction with GRHL3, nor functional cooperativity due to diverse target gene selectivity during epithelia development (By similarity). May play a role in regulating glucose homeostasis and insulin signaling.
Cellular Location	Nucleus
Tissue Location	Isoform 1 is highly expressed in brain, pancreas, tonsil, placenta and kidney. Isoform 2 is highly expressed in brain and liver. Expressed at very low levels in non-steroidogenic cells

Background

This gene encodes a member of the grainyhead family of transcription factors. The encoded protein can exist as a homodimer or can form heterodimers with sister-of-mammalian grainyhead or brother-of-mammalian grainyhead. This protein functions as a transcription factor during development. [provided by RefSeq, Jun 2009]

Images



Paraformaldehyde-fixed, paraffin embedded (Rat liver); Antigen retrieval by boiling in sodium citrate buffer (pH6.0) for 15min; Block endogenous peroxidase by 3% hydrogen peroxide for 20 minutes; Blocking buffer (normal goat serum) at 37°C for 30min; Antibody incubation with (GRHL1) Polyclonal Antibody, Unconjugated (AP56210) at 1:500 overnight at 4°C, followed by a conjugated secondary (sp-0023) for 20 minutes and DAB staining.

Please note: All products are 'FOR RESEARCH USE ONLY. NOT FOR USE IN DIAGNOSTIC OR THERAPEUTIC PROCEDURES'.