

ZNF766 Polyclonal Antibody

Purified Rabbit Polyclonal Antibody (Pab)

Catalog # AP56286

Product Information

Application	WB, IHC-P, IHC-F, IF, ICC, E
Primary Accession	Q5HY98
Reactivity	Human
Host	Rabbit
Clonality	Polyclonal
Calculated MW	54507
Physical State	Liquid
Immunogen	KLH conjugated synthetic peptide derived from human ZNF766
Epitope Specificity	51-150/468
Isotype	IgG
Purity	affinity purified by Protein A
Buffer	0.01M TBS (pH7.4) with 1% BSA, 0.02% Proclin300 and 50% Glycerol.
SUBCELLULAR LOCATION	Nuclear
SIMILARITY	Belongs to the krueppel C2H2-type zinc-finger protein family.Contains 10 C2H2-type zinc fingers.Contains 1 KRAB domain.
Important Note	This product as supplied is intended for research use only, not for use in human, therapeutic or diagnostic applications.
Background Descriptions	ZNF766 belongs to the krueppel C2H2 type zinc finger protein family and may be involved in transcriptional regulation.

Additional Information

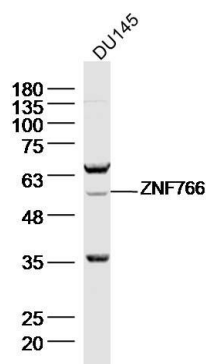
Gene ID	90321
Other Names	Zinc finger protein 766, ZNF766
Dilution	WB=1:500-2000,IHC-P=1:100-500,IHC-F=1:100-500,ICC=1:100-500,IF=1:100-500,ELISA=1:5000-10000
Format	0.01M TBS(pH7.4) with 1% BSA, 0.09% (W/V) sodium azide and 50% Glyce
Storage	Store at -20 °C for one year. Avoid repeated freeze/thaw cycles. When reconstituted in sterile pH 7.4 0.01M PBS or diluent of antibody the antibody is stable for at least two weeks at 2-4 °C.

Protein Information

Name	ZNF766
-------------	--------

Function	May be involved in transcriptional regulation.
Cellular Location	Nucleus.

Images



Sample: DU145 Cell (Human) Lysate at 40 ug
 Primary: Anti-ZNF766 (AP56286) at 1/300 dilution
 Secondary: IRDye800CW Goat Anti-Rabbit IgG at 1/20000 dilution
 Predicted band size: 54 kD
 Observed band size: 54 kD

Please note: All products are 'FOR RESEARCH USE ONLY. NOT FOR USE IN DIAGNOSTIC OR THERAPEUTIC PROCEDURES'.