

Transmembrane protein 30A Polyclonal Antibody

Purified Rabbit Polyclonal Antibody (Pab)

Catalog # AP56322

Product Information

Application	IHC-P, IHC-F, IF, ICC, E
Primary Accession	Q9NV96
Reactivity	Rat, Pig, Bovine
Host	Rabbit
Clonality	Polyclonal
Calculated MW	40684
Physical State	Liquid
Immunogen	KLH conjugated synthetic peptide derived from human Transmembrane protein 30A
Epitope Specificity	251-350/361
Isotype	IgG
Purity	affinity purified by Protein A
Buffer	0.01M TBS (pH7.4) with 1% BSA, 0.02% Proclin300 and 50% Glycerol.
SUBCELLULAR LOCATION	Membrane; Multi-pass membrane protein
SIMILARITY	Belongs to the CDC50/LEM3 family.
Important Note	This product as supplied is intended for research use only, not for use in human, therapeutic or diagnostic applications.
Background Descriptions	Enables aminophospholipid flippase activity. Involved in several processes, including phospholipid transport; positive regulation of transport; and xenobiotic transmembrane transport. Located in endoplasmic reticulum and plasma membrane. Part of phospholipid-translocating ATPase complex. [provided by Alliance of Genome Resources, Nov 2021]

Additional Information

Gene ID	55754
Other Names	Cell cycle control protein 50A, P4-ATPase flippase complex beta subunit TMEM30A, Transmembrane protein 30A, TMEM30A (HGNC:16667), C6orf67, CDC50A
Dilution	IHC-P=1:100-500,IHC-F=1:100-500,ICC=1:100-500,IF=1:100-500,ELISA=1:5000-10000
Format	0.01M TBS(pH7.4) with 1% BSA, 0.09% (W/V) sodium azide and 50% Glyce
Storage	Store at -20 °C for one year. Avoid repeated freeze/thaw cycles. When reconstituted in sterile pH 7.4 0.01M PBS or diluent of antibody the antibody is stable for at least two weeks at 2-4 °C.

Protein Information

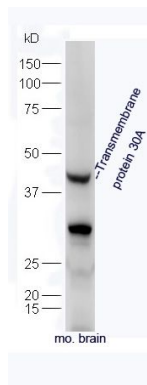
Name TMEM30A ([HGNC:16667](#))

Synonyms C6orf67, CDC50A

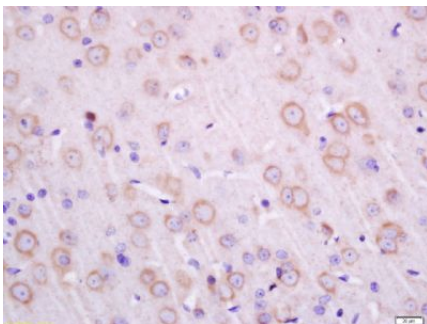
Function Accessory component of a P4-ATPase flippase complex which catalyzes the hydrolysis of ATP coupled to the transport of aminophospholipids from the outer to the inner leaflet of various membranes and ensures the maintenance of asymmetric distribution of phospholipids. Phospholipid translocation also seems to be implicated in vesicle formation and in uptake of lipid signaling molecules. The beta subunit may assist in binding of the phospholipid substrate. Required for the proper folding, assembly and ER to Golgi exit of the ATP8A2:TMEM30A flippase complex. ATP8A2:TMEM30A may be involved in regulation of neurite outgrowth, and, reconstituted to liposomes, predominantly transports phosphatidylserine (PS) and to a lesser extent phosphatidylethanolamine (PE). The ATP8A1:TMEM30A flippase complex seems to play a role in regulation of cell migration probably involving flippase-mediated translocation of phosphatidylethanolamine (PE) at the plasma membrane. Required for the formation of the ATP8A2, ATP8B1 and ATP8B2 P-type ATPase intermediate phosphoenzymes. Involved in uptake of platelet-activating factor (PAF), synthetic drug alkylphospholipid edelfosine, and, probably in association with ATP8B1, of perifosine. Also mediates the export of alpha subunits ATP8A1, ATP8B1, ATP8B2, ATP8B4, ATP10A, ATP10B, ATP10D, ATP11A, ATP11B and ATP11C from the ER to other membrane localizations.

Cellular Location Membrane; Multi-pass membrane protein. Cell membrane. Golgi apparatus. Cytoplasmic vesicle, secretory vesicle membrane. Apical cell membrane

Images



Protein: brain(mouse) lysate at 40ug;
Primary: rabbit Anti-Transmembrane protein 30A (AP56322) at 1:300;
Secondary: HRP conjugated Goat-Anti-rabbit IgG(bs-0295G-HRP) at 1: 5000;
Predicted band size: 41 kD
Observed band size: 41 kD



Tissue/cell: rat brain tissue; 4% Paraformaldehyde-fixed and paraffin-embedded;
Antigen retrieval: citrate buffer (0.01M, pH 6.0), Boiling bathing for 15min; Block endogenous peroxidase by 3% Hydrogen peroxide for 30min; Blocking buffer (normal goat serum,C-0005) at 37°C for 20 min;
Incubation: Anti-Transmembrane protein 30A Polyclonal Antibody, Unconjugated(AP56322) 1:200, overnight at 4°C, followed by conjugation to the secondary antibody(SP-0023) and DAB(C-0010) staining

Please note: All products are 'FOR RESEARCH USE ONLY. NOT FOR USE IN DIAGNOSTIC OR THERAPEUTIC PROCEDURES'.