

Interferon alpha 2 Rabbit pAb

Interferon alpha 2 Rabbit pAb
Catalog # AP56333

Product Information

Application	WB, E
Primary Accession	P01563
Reactivity	Human
Predicted	Mouse
Host	Rabbit
Clonality	Polyclonal
Calculated MW	19 KDa
Physical State	Liquid
Immunogen	KLH conjugated synthetic peptide derived from human Interferon alpha 2
Isotype	IgG
Purity	affinity purified by Protein A
Buffer	0.01M TBS (pH7.4) with 1% BSA, 0.02% Proclin300 and 50% Glycerol.
SUBCELLULAR LOCATION	Secreted.
SIMILARITY	Belongs to the alpha/beta interferon family.
SUBUNIT	Interacts with IFNAR2.
Important Note	This product as supplied is intended for research use only, not for use in human, therapeutic or diagnostic applications.
Background Descriptions	Interferon alpha 2b is one of the known 23 different variants of IFN-alpha. The individual proteins have molecular masses between 19-26 kDa and consist of proteins with lengths of 156-166 and 172 amino acids. All IFN-alpha subtypes possess a common conserved sequence region between amino acid positions 115-151 while the amino-terminal ends are variable. Many IFN-alpha subtypes differ in their sequences at only one or two positions. Naturally occurring variants also include proteins truncated by 10 amino acids at the carboxy-terminal end. Interferon alpha 2b is a potent immune modulator. It can either inhibit or enhance immune cell activity within the tightly regulated microenvironment of inflammation, depending upon the concentration of the cytokine and the activation stage of the cell. Interferon alpha 2B is currently used as an anticancer drug due to it's antiproliferative activity.

Additional Information

Other Names	Interferon alpha-2, IFN-alpha-2, Interferon alpha-A, LeIF A, IFNA2, IFNA2A, IFNA2B, IFNA2C
Dilution	WB=1:500-2000,ELISA=1:5000-10000
Storage	Store at -20 °C for one year. Avoid repeated freeze/thaw cycles. When reconstituted in sterile pH 7.4 0.01M PBS or diluent of antibody the antibody is stable for at least two weeks at 2-4 °C.

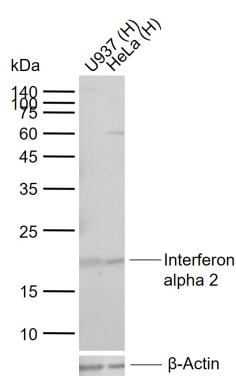
Protein Information

Background

Interferon alpha 2b is one of the known 23 different variants of IFN-alpha. The individual proteins have molecular masses between 19-26 kDa and consist of proteins with lengths of 156-166 and 172 amino acids. All IFN-alpha subtypes possess a common conserved sequence region between amino acid positions 115-151 while the amino-terminal ends are variable. Many IFN-alpha subtypes differ in their sequences at only one or two positions. Naturally occurring variants also include proteins truncated by 10 amino acids at the carboxy-terminal end.

Interferon alpha 2b is a potent immune modulator. It can either inhibit or enhance immune cell activity within the tightly regulated microenvironment of inflammation, depending upon the concentration of the cytokine and the activation stage of the cell. Interferon alpha 2B is currently used as an anticancer drug due to its antiproliferative activity.

Images



Sample:

Lane 1: Human U937 cell lysates

Lane 2: Human HeLa cell lysates

Primary: Anti-Interferon alpha 2 (AP56333) at 1/1000 dilution

Secondary: IRDye800CW Goat Anti-Rabbit IgG at 1/20000 dilution

Predicted band size: 19 kDa

Observed band size: 19 kDa

Please note: All products are 'FOR RESEARCH USE ONLY. NOT FOR USE IN DIAGNOSTIC OR THERAPEUTIC PROCEDURES'.