

KLHL5 Polyclonal Antibody

Purified Rabbit Polyclonal Antibody (Pab)

Catalog # AP56399

Product Information

| | |
|--------------------------------|---|
| Application | WB, IHC-P, IHC-F, IF, ICC, E |
| Primary Accession | Q96PQ7 |
| Reactivity | Rat, Dog, Bovine |
| Host | Rabbit |
| Clonality | Polyclonal |
| Calculated MW | 84457 |
| Physical State | Liquid |
| Immunogen | KLH conjugated synthetic peptide derived from human KLHL5 |
| Epitope Specificity | 1-100/755 |
| Isotype | IgG |
| Purity | affinity purified by Protein A |
| Buffer | 0.01M TBS (pH7.4) with 1% BSA, 0.02% Proclin300 and 50% Glycerol. |
| SUBCELLULAR LOCATION | Cytoplasm: cytoskeleton. |
| SIMILARITY | Contains 1 BTB (POZ) domain.Contains 6 Kelch repeats. |
| Important Note | This product as supplied is intended for research use only, not for use in human, therapeutic or diagnostic applications. |
| Background Descriptions | The kelch repeat protein family is an actin binding protein. It is characterized by tandemly arranged motifs of about 50 amino acids. Most members of the kelch repeat family were cytoskeletal proteins implicated in various cellular processes, such as actin cytoskeleton interaction, cytoplasmic sequestration of transcription factors and cell morphology. KLHL5 has high identity with Drosophila kelch protein and many other family members. A novel splicing variant of KLHL5, named KLHL5b, has been identified. |

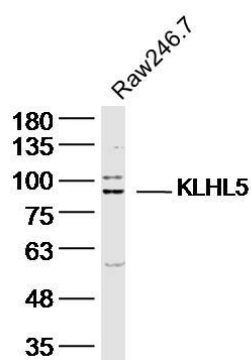
Additional Information

| | |
|---------------------------|---|
| Gene ID | 51088 |
| Other Names | Kelch-like protein 5, KLHL5 |
| Target/Specificity | Expressed in adrenal gland, ovary and thyroid gland and less abundantly in lymph node, prostate, spinal chord, testis and trachea. |
| Dilution | WB=1:500-2000,IHC-P=1:100-500,IHC-F=1:100-500,ICC=1:100-500,IF=1:100-500,ELISA=1:5000-10000 |
| Format | 0.01M TBS(pH7.4) with 1% BSA, 0.09% (W/V) sodium azide and 50% Glyce |
| Storage | Store at -20 °C for one year. Avoid repeated freeze/thaw cycles. When reconstituted in sterile pH 7.4 0.01M PBS or diluent of antibody the antibody is stable for at least two weeks at 2-4 °C. |

Protein Information

| | |
|--------------------------|--|
| Name | KLHL5 |
| Cellular Location | Cytoplasm, cytoskeleton. |
| Tissue Location | Expressed in adrenal gland, ovary and thyroid gland and less abundantly in lymph node, prostate, spinal cord, testis and trachea |

Images



Sample: Raw264.7 (Mouse) Lysate at 40 ug
Primary: Anti-KLHL5 (AP56399) at 1/300 dilution
Secondary: IRDye800CW Goat Anti-Rabbit IgG at 1/20000 dilution
Predicted band size: 84 kD
Observed band size: 84 kD

Please note: All products are 'FOR RESEARCH USE ONLY. NOT FOR USE IN DIAGNOSTIC OR THERAPEUTIC PROCEDURES'.