

# BCOX1 Polyclonal Antibody

Purified Rabbit Polyclonal Antibody (Pab)

Catalog # AP56481

## Product Information

Application	IHC-P, IHC-F, IF, ICC, E
Primary Accession	<a href="#">Q14667</a>
Reactivity	Rat, Bovine
Host	Rabbit
Clonality	Polyclonal
Calculated MW	253700

## Additional Information

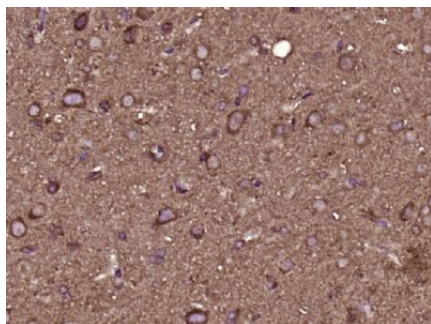
Gene ID	9703
Other Names	Protein KIAA0100, Antigen MLAA-22, Breast cancer-overexpressed gene 1 protein, KIAA0100, BCOX1
Dilution	IHC-P=1:100-500,IHC-F=1:100-500,ICC=1:100-500,IF=1:100-500,ELISA=1:5000-10000
Format	0.01M TBS(pH7.4) with 1% BSA, 0.09% (W/V) sodium azide and 50% Glyce
Storage	Store at -20 °C for one year. Avoid repeated freeze/thaw cycles. When reconstituted in sterile pH 7.4 0.01M PBS or diluent of antibody the antibody is stable for at least two weeks at 2-4 °C.

## Protein Information

Name	BLTP2 ( <a href="#">HGNC:28960</a> )
Synonyms	BCOX1, KIAA0100
Function	Tube-forming lipid transport protein which binds to phosphatidylinositols and affects phosphatidylinositol-4,5-bisphosphate (PtdIns-4,5-P2) distribution.
Cellular Location	Cell membrane {ECO:0000250 UniProtKB:Q9VZS7}. Endoplasmic reticulum membrane {ECO:0000250 UniProtKB:Q9VZS7} Mitochondrion membrane {ECO:0000250 UniProtKB:Q06179}. Note=Localizes to endoplasmic reticulum-cell membrane and some endoplasmic reticulum- mitochondria contact sites. {ECO:0000250 UniProtKB:Q9VZS7}
Tissue Location	Expressed in pancreas, placenta and up-regulated in breast carcinoma epithelial cells, ductal in situ carcinoma (DCIS), invasive breast carcinoma (IBC) and metastatic breast carcinoma cells (MET).

## Images

---



Paraformaldehyde-fixed, paraffin embedded (Rat brain); Antigen retrieval by boiling in sodium citrate buffer (pH6.0) for 15min; Block endogenous peroxidase by 3% hydrogen peroxide for 20 minutes; Blocking buffer (normal goat serum) at 37°C for 30min; Antibody incubation with (BCOX1) Polyclonal Antibody, Unconjugated (AP56481) at 1:400 overnight at 4°C, followed by operating according to SP Kit(Rabbit) (sp-0023) instructions and DAB staining.

Please note: All products are 'FOR RESEARCH USE ONLY. NOT FOR USE IN DIAGNOSTIC OR THERAPEUTIC PROCEDURES'.