

KIF2A Polyclonal Antibody

Purified Rabbit Polyclonal Antibody (Pab)
Catalog # AP56537

Product Information

Application	IHC-P, IHC-F, IF, ICC, E
Primary Accession	O00139
Reactivity	Rat, Pig, Dog, Bovine
Host	Rabbit
Clonality	Polyclonal
Calculated MW	79955
Physical State	Liquid
Immunogen	KLH conjugated synthetic peptide derived from human KIF2A
Epitope Specificity	611-706/706
Isotype	IgG
Purity	affinity purified by Protein A
Buffer	0.01M TBS (pH7.4) with 1% BSA, 0.02% Proclin300 and 50% Glycerol.
SUBCELLULAR LOCATION	Cytoplasm. Cytoplasm > cytoskeleton > centrosome. Cytoplasm > cytoskeleton > spindle pole. Cytoplasm > cytoskeleton > spindle. Localized to the spindle microtubules and spindle poles from prophase to metaphase. Efficient targeting to spindle microtubules and spindle poles requires the kinase activity of PLK1. Recruited to mitotic spindles by interaction with PSRC1.
SIMILARITY	Belongs to the kinesin-like protein family. MCAK/KIF2 subfamily. Contains 1 kinesin-motor domain.
Important Note	This product as supplied is intended for research use only, not for use in human, therapeutic or diagnostic applications.
Background Descriptions	The protein encoded by this gene is a plus end-directed motor required for normal mitotic progression. The encoded protein is required for normal spindle activity during mitosis and is necessary for normal brain development. Several transcript variants encoding different isoforms have been found for this gene. [provided by RefSeq, Sep 2011]

Additional Information

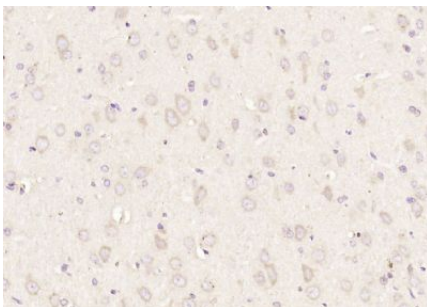
Gene ID	3796
Other Names	Kinesin-like protein KIF2A, Kinesin-2, hK2, KIF2A, KIF2, KNS2
Dilution	IHC-P=1:100-500,IHC-F=1:100-500,ICC=1:100-500,IF=1:100-500,ELISA=1:5000-10000
Format	0.01M TBS(pH7.4) with 1% BSA, 0.09% (W/V) sodium azide and 50% Glyce
Storage	Store at -20 °C for one year. Avoid repeated freeze/thaw cycles. When reconstituted in sterile pH 7.4 0.01M PBS or diluent of antibody the antibody

is stable for at least two weeks at 2-4 °C.

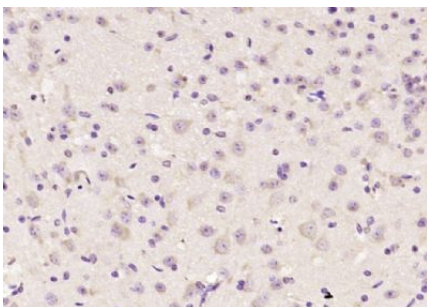
Protein Information

Name	KIF2A
Synonyms	KIF2, KNS2
Function	Plus end-directed microtubule-dependent motor required for normal brain development. May regulate microtubule dynamics during axonal growth. Required for normal progression through mitosis. Required for normal congress of chromosomes at the metaphase plate. Required for normal spindle dynamics during mitosis. Promotes spindle turnover. Implicated in formation of bipolar mitotic spindles. Has microtubule depolymerization activity.
Cellular Location	Cytoplasm. Cytoplasm, cytoskeleton, microtubule organizing center, centrosome. Cytoplasm, cytoskeleton, spindle pole. Cytoplasm, cytoskeleton, spindle. Note=Localized to the spindle microtubules and spindle poles from prophase to metaphase. Efficient targeting to spindle microtubules and spindle poles requires the kinase activity of PLK1. Recruited to mitotic spindles by interaction with PSRC1

Images



Paraformaldehyde-fixed, paraffin embedded (rat brain); Antigen retrieval by boiling in sodium citrate buffer (pH6.0) for 15min; Block endogenous peroxidase by 3% hydrogen peroxide for 20 minutes; Blocking buffer (normal goat serum) at 37°C for 30min; Antibody incubation with (KIF2A) Polyclonal Antibody, Unconjugated (AP56537) at 1:200 overnight at 4°C, followed by operating according to SP Kit(Rabbit) (sp-0023) instructions and DAB staining.



Paraformaldehyde-fixed, paraffin embedded (mouse brain); Antigen retrieval by boiling in sodium citrate buffer (pH6.0) for 15min; Block endogenous peroxidase by 3% hydrogen peroxide for 20 minutes; Blocking buffer (normal goat serum) at 37°C for 30min; Antibody incubation with (KIF2A) Polyclonal Antibody, Unconjugated (AP56537) at 1:200 overnight at 4°C, followed by operating according to SP Kit(Rabbit) (sp-0023) instructions and DAB staining.

Please note: All products are 'FOR RESEARCH USE ONLY. NOT FOR USE IN DIAGNOSTIC OR THERAPEUTIC PROCEDURES'.