

Tropomodulin 2 Polyclonal Antibody

Purified Rabbit Polyclonal Antibody (Pab)

Catalog # AP56583

Product Information

Application	WB, IHC-P, IHC-F, IF, ICC, E
Primary Accession	Q9NZR1
Reactivity	Rat, Pig, Dog, Bovine
Host	Rabbit
Clonality	Polyclonal
Calculated MW	39595
Physical State	Liquid
Immunogen	KLH conjugated synthetic peptide derived from human Tropomodulin 2
Epitope Specificity	251-351/351
Isotype	IgG
Purity	affinity purified by Protein A
Buffer	0.01M TBS (pH7.4) with 1% BSA, 0.02% Proclin300 and 50% Glycerol.
SUBCELLULAR LOCATION	Cytoplasm; cytoskeleton
SIMILARITY	Belongs to the tropomodulin family.
SUBUNIT	Binds to the N-terminus of tropomyosin and to actin.
Important Note	This product as supplied is intended for research use only, not for use in human, therapeutic or diagnostic applications.
Background Descriptions	This gene encodes a neuronal-specific member of the tropomodulin family of actin-regulatory proteins. The encoded protein caps the pointed end of actin filaments preventing both elongation and depolymerization. The capping activity of this protein is dependent on its association with tropomyosin. Alternatively spliced transcript variants encoding different isoforms have been described. [provided by RefSeq, Dec 2008]

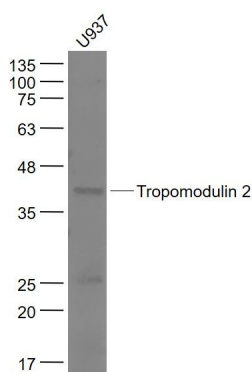
Additional Information

Gene ID	29767
Other Names	Tropomodulin-2, Neuronal tropomodulin, N-Tmod, TMOD2, NTMOD
Target/Specificity	Neuronal-tissue specific.
Dilution	WB=1:500-2000,IHC-P=1:100-500,IHC-F=1:100-500,ICC=1:100-500,IF=1:100-500,ELISA=1:5000-10000
Format	0.01M TBS(pH7.4) with 1% BSA, 0.09% (W/V) sodium azide and 50% Glyce
Storage	Store at -20 °C for one year. Avoid repeated freeze/thaw cycles. When reconstituted in sterile pH 7.4 0.01M PBS or diluent of antibody the antibody is stable for at least two weeks at 2-4 °C.

Protein Information

Name	TMOD2
Synonyms	NTMOD
Function	Blocks the elongation and depolymerization of the actin filaments at the pointed end. The Tmod/TM complex contributes to the formation of the short actin protofilament, which in turn defines the geometry of the membrane skeleton (By similarity).
Cellular Location	Cytoplasm, cytoskeleton.
Tissue Location	Neuronal-tissue specific.

Images



Sample:

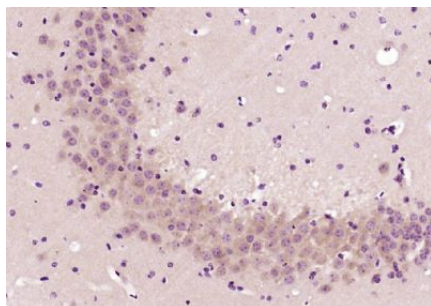
U937(Human) Cell Lysate at 30 ug

Primary: Anti- Tropomodulin 2 (AP56583) at 1/1000 dilution

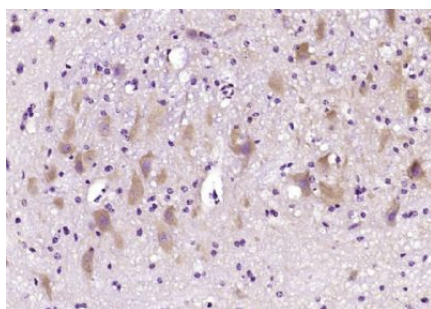
Secondary: IRDye800CW Goat Anti-Rabbit IgG at 1/20000 dilution

Predicted band size: 40 kD

Observed band size: 40 kD



Paraformaldehyde-fixed, paraffin embedded (mouse brain); Antigen retrieval by boiling in sodium citrate buffer (pH6.0) for 15min; Block endogenous peroxidase by 3% hydrogen peroxide for 20 minutes; Blocking buffer (normal goat serum) at 37°C for 30min; Antibody incubation with (Tropomodulin 2) Polyclonal Antibody, Unconjugated (AP56583) at 1:200 overnight at 4°C, followed by operating according to SP Kit(Rabbit) (sp-0023) instructions and DAB staining.



Paraformaldehyde-fixed, paraffin embedded (mouse cerebellum); Antigen retrieval by boiling in sodium citrate buffer (pH6.0) for 15min; Block endogenous peroxidase by 3% hydrogen peroxide for 20 minutes; Blocking buffer (normal goat serum) at 37°C for 30min; Antibody incubation with (Tropomodulin 2) Polyclonal Antibody, Unconjugated (AP56583) at 1:200 overnight at 4°C, followed by operating according to SP Kit(Rabbit) (sp-0023) instructions and DAB staining.

Please note: All products are 'FOR RESEARCH USE ONLY. NOT FOR USE IN DIAGNOSTIC OR THERAPEUTIC PROCEDURES'.