

Tropomodulin 3 Polyclonal Antibody

Purified Rabbit Polyclonal Antibody (Pab)

Catalog # AP56584

Product Information

Application	IHC-P, IHC-F, IF, ICC, E
Primary Accession	Q9NYL9
Reactivity	Rat, Pig, Dog, Bovine
Host	Rabbit
Clonality	Polyclonal
Calculated MW	39595
Physical State	Liquid
Immunogen	KLH conjugated synthetic peptide derived from human Tropomodulin 3
Epitope Specificity	21-120/352
Isotype	IgG
Purity	affinity purified by Protein A
Buffer	0.01M TBS (pH7.4) with 1% BSA, 0.02% Proclin300 and 50% Glycerol.
SUBCELLULAR LOCATION	Cytoplasm > cytoskeleton.
SIMILARITY	Belongs to the tropomodulin family.
SUBUNIT	Binds to the N-terminus of tropomyosin and to actin.
Important Note	This product as supplied is intended for research use only, not for use in human, therapeutic or diagnostic applications.
Background Descriptions	<p>□Originally isolated from human erythrocytes, the tropomodulin (TMOD) family of proteins cap the pointed end of Actin filaments. A component of the membrane skeleton, tropomodulin binds to the amino-terminus of Tropomyosin, which coats the surface of Actin, and thus blocks the elongation and depolymerization of Actin filaments. Four tropomodulin isoforms, tropomodulin 1-4, have been characterized in humans. Tropomodulin expression is isoform-specific; tropomodulin 3 is expressed ubiquitously, whereas tropomodulin 2 and tropomodulin 4 are expressed in neuronal tissue and muscle, respectively. Ubiquitous expression of seven tropomodulin 3 transcripts, ranging in size between 1 and 9.5 kb, have been identified by Northern Blot analysis on human tissues. The human TMOD3 gene maps to chromosome 15q21.2, within the same region as the gene for amyotrophic lateral sclerosis 5 (ALS5), and encodes a 352 amino acid protein. Tmod3, the mouse homolog to human TMOD3, is present as early as day 7 in embryonic development and is expressed throughout development.</p>

Additional Information

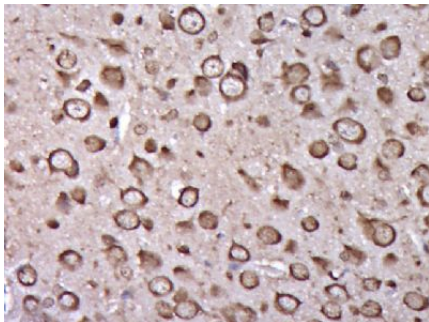
Gene ID	29766
Other Names	Tropomodulin-3, Ubiquitous tropomodulin, U-Tmod, TMOD3
Target/Specificity	Ubiquitous.

Dilution	IHC-P=1:100-500,IHC-F=1:100-500,ICC=1:100-500,IF=1:100-500,ELISA=1:5000-10000
Format	0.01M TBS(pH7.4) with 1% BSA, 0.09% (W/V) sodium azide and 50% Glyce
Storage	Store at -20 °C for one year. Avoid repeated freeze/thaw cycles. When reconstituted in sterile pH 7.4 0.01M PBS or diluent of antibody the antibody is stable for at least two weeks at 2-4 °C.

Protein Information

Name	TMOD3
Function	Blocks the elongation and depolymerization of the actin filaments at the pointed end. The Tmod/TM complex contributes to the formation of the short actin protofilament, which in turn defines the geometry of the membrane skeleton (By similarity).
Cellular Location	Cytoplasm, cytoskeleton.
Tissue Location	Ubiquitous..

Images



Paraformaldehyde-fixed, paraffin embedded (Rat brain); Antigen retrieval by boiling in sodium citrate buffer (pH6.0) for 15min; Block endogenous peroxidase by 3% hydrogen peroxide for 20 minutes; Blocking buffer (normal goat serum) at 37°C for 30min; Antibody incubation with (Tropomodulin 3) Polyclonal Antibody, Unconjugated (AP56584) at 1:400 overnight at 4°C, followed by operating according to SP Kit(Rabbit) (sp-0023) instructions and DAB staining.

Please note: All products are 'FOR RESEARCH USE ONLY. NOT FOR USE IN DIAGNOSTIC OR THERAPEUTIC PROCEDURES'.