

ITPRIPL2 Rabbit pAb

ITPRIPL2 Rabbit pAb
Catalog # AP56596

Product Information

Application	WB
Primary Accession	Q3MIP1
Reactivity	Human, Mouse
Predicted	Rat, Dog, Sheep
Host	Rabbit
Clonality	Polyclonal
Calculated MW	58446
Physical State	Liquid
Immunogen	KLH conjugated synthetic peptide derived from human ITPRIPL2
Epitope Specificity	121-220/535
Isotype	IgG
Purity	affinity purified by Protein A
Buffer	0.01M TBS (pH7.4) with 1% BSA, 0.02% Proclin300 and 50% Glycerol.
SUBCELLULAR LOCATION	Membrane; Single-pass type I membrane protein.
SIMILARITY	Belongs to the ITPRIP family.
Important Note	This product as supplied is intended for research use only, not for use in human, therapeutic or diagnostic applications.

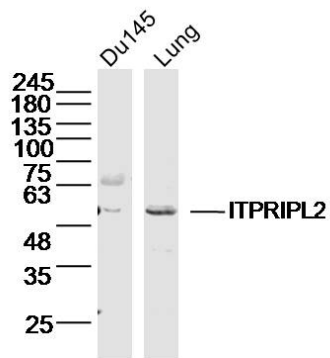
Additional Information

Gene ID	162073
Other Names	Inositol 1, 4, 5-trisphosphate receptor-interacting protein-like 2, ITPRIPL2
Dilution	WB=1:500-2000
Storage	Store at -20 °C for one year. Avoid repeated freeze/thaw cycles. When reconstituted in sterile pH 7.4 0.01M PBS or diluent of antibody the antibody is stable for at least two weeks at 2-4 °C.

Protein Information

Name	ITPRIPL2
Cellular Location	Membrane; Single-pass type I membrane protein.

Images



Sample:
DU145 Cell (Human) Lysate at 40 ug
Lung (Mouse) Lysate at 40 ug
Primary: Anti-ITPRIPL2 (AP56596) at 1/300 dilution
Secondary: IRDye800CW Goat Anti-Rabbit IgG at 1/20000 dilution
Predicted band size: 54 kD
Observed band size: 54 kD

Please note: All products are 'FOR RESEARCH USE ONLY. NOT FOR USE IN DIAGNOSTIC OR THERAPEUTIC PROCEDURES'.