

# TOM1L2 Rabbit pAb

TOM1L2 Rabbit pAb

Catalog # AP56616

## Product Information

---

<b>Application</b>	WB
<b>Primary Accession</b>	<a href="#">Q6ZVM7</a>
<b>Reactivity</b>	Mouse
<b>Predicted</b>	Human, Rat, Dog, Horse, Rabbit
<b>Host</b>	Rabbit
<b>Clonality</b>	Polyclonal
<b>Calculated MW</b>	55556
<b>Physical State</b>	Liquid
<b>Immunogen</b>	KLH conjugated synthetic peptide derived from human TOM1L2
<b>Epitope Specificity</b>	331-430/507
<b>Isotype</b>	IgG
<b>Purity</b>	affinity purified by Protein A
<b>Buffer</b>	0.01M TBS (pH7.4) with 1% BSA, 0.02% Proclin300 and 50% Glycerol.
<b>SIMILARITY</b>	Belongs to the TOM1 family. Contains 1 GAT domain. Contains 1 VHS domain.
<b>Important Note</b>	This product as supplied is intended for research use only, not for use in human, therapeutic or diagnostic applications.
<b>Background Descriptions</b>	Probable role in protein transport. May regulate growth factor-induced mitogenic signaling.

## Additional Information

---

<b>Gene ID</b>	146691
<b>Other Names</b>	TOM1-like protein 2, Target of Myb-like protein 2, TOM1L2
<b>Target/Specificity</b>	Ubiquitously expressed with higher expression in heart and skeletal muscle.
<b>Dilution</b>	WB=1:500-2000
<b>Storage</b>	Store at -20 °C for one year. Avoid repeated freeze/thaw cycles. When reconstituted in sterile pH 7.4 0.01M PBS or diluent of antibody the antibody is stable for at least two weeks at 2-4 °C.

## Protein Information

---

<b>Name</b>	TOM1L2
<b>Function</b>	Acts as a MYO6/Myosin VI adapter protein that targets myosin VI to endocytic structures (PubMed: <a href="#">23023224</a> ). May also play a role in recruiting

clathrin to endosomes (PubMed:[16412388](#)). May regulate growth factor-induced mitogenic signaling (PubMed:[16479011](#)).

## Tissue Location

Ubiquitously expressed with higher expression in heart and skeletal muscle.

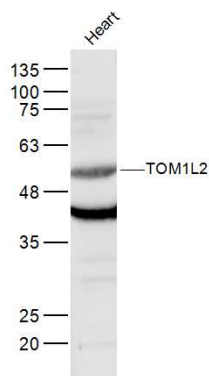
## Background

---

Probable role in protein transport. May regulate growth factor-induced mitogenic signaling.

## Images

---



### Sample:

Heart (Mouse) Lysate at 40 ug

Primary: Anti-TOM1L2 (AP56616) at 1/300 dilution

Secondary: IRDye800CW Goat Anti-Rabbit IgG at 1/20000 dilution

Predicted band size: 56 kD

Observed band size: 56 kD

Please note: All products are 'FOR RESEARCH USE ONLY. NOT FOR USE IN DIAGNOSTIC OR THERAPEUTIC PROCEDURES'.