

# SCGF Rabbit pAb

SCGF Rabbit pAb  
Catalog # AP56646

## Product Information

---

<b>Application</b>	IHC-P, IHC-F, IF
<b>Primary Accession</b>	<a href="#">Q9Y240</a>
<b>Reactivity</b>	Human
<b>Host</b>	Rabbit
<b>Clonality</b>	Polyclonal
<b>Calculated MW</b>	35695
<b>Physical State</b>	Liquid
<b>Immunogen</b>	KLH conjugated synthetic peptide derived from human SCGF
<b>Epitope Specificity</b>	101-200/323
<b>Isotype</b>	IgG
<b>Purity</b>	affinity purified by Protein A
<b>Buffer</b>	0.01M TBS (pH7.4) with 1% BSA, 0.02% Proclin300 and 50% Glycerol.
<b>SUBCELLULAR LOCATION</b>	Cytoplasm. Secreted.
<b>SIMILARITY</b>	Contains 1 C-type lectin domain.
<b>Post-translational modifications</b>	O-glycosylated. Probably sulfated on the O-glycans.
<b>Important Note</b>	This product as supplied is intended for research use only, not for use in human, therapeutic or diagnostic applications.
<b>Background Descriptions</b>	SCGF is a cytokine for primitive hematopoietic progenitor cells and exhibits species-specific activity. It is predominantly expressed in proliferating chondrocytes, bone marrow cells, the periosteum and the perichondrium of skeletal tissues. SCGF contains an N-terminal Arg-Gly-Asp triplet (RGD triplet), leucine zipper domains, a C-terminal C-type lectin domain and numerous potential glycosylation sites. It has burst-promoting activity and granulocyte/macrophage colony-promoting activity in vitro. SCGF is directly correlated to granulocyte recovery following stem cell transplantation and thus can be an indicator of hematopoietic recovery following stem cell transplantation.

## Additional Information

---

<b>Gene ID</b>	6320
<b>Other Names</b>	C-type lectin domain family 11 member A, C-type lectin superfamily member 3, Lymphocyte secreted C-type lectin, Osteolectin, Stem cell growth factor, p47, CLEC11A, CLECSF3, LSLCL, SCGF
<b>Target/Specificity</b>	Expressed in skeletal tissues including bone marrow, chondrocytes, primary ossification center-associated cells, the perichondrium and periosteum. Lower levels of expression were detected in spleen, thymus, appendix and fetal liver.

<b>Dilution</b>	IHC-P=1:100-500,IHC-F=1:100-500,IF=1:100-500
<b>Storage</b>	Store at -20 °C for one year. Avoid repeated freeze/thaw cycles. When reconstituted in sterile pH 7.4 0.01M PBS or diluent of antibody the antibody is stable for at least two weeks at 2-4 °C.

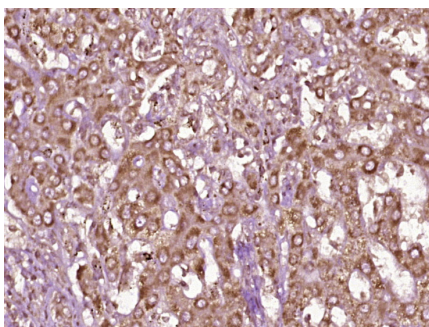
## Protein Information

<b>Name</b>	CLEC11A
<b>Synonyms</b>	CLECSF3, LSLCL, SCGF
<b>Function</b>	Promotes osteogenesis by stimulating the differentiation of mesenchymal progenitors into mature osteoblasts (PubMed: <a href="#">27976999</a> ). Important for repair and maintenance of adult bone (By similarity).
<b>Cellular Location</b>	Cytoplasm. Secreted
<b>Tissue Location</b>	Expressed in skeletal tissues including bone marrow, chondrocytes, primary ossification center-associated cells, the perichondrium and periosteum. Lower levels of expression were detected in spleen, thymus, appendix and fetal liver

## Background

SCGF is a cytokine for primitive hematopoietic progenitor cells and exhibits species-specific activity. It is predominantly expressed in proliferating chondrocytes, bone marrow cells, the periosteum and the perichondrium of skeletal tissues. SCGF contains an N-terminal Arg-Gly-Asp triplet (RGD triplet), leucine zipper domains, a C-terminal C-type lectin domain and numerous potential glycosylation sites. It has burst-promoting activity and granulocyte/macrophage colony-promoting activity in vitro. SCGF is directly correlated to granulocyte recovery following stem cell transplantation and thus can be an indicator of hematopoietic recovery following stem cell transplantation.

## Images



Paraformaldehyde-fixed, paraffin embedded (human liver carcinoma); Antigen retrieval by boiling in sodium citrate buffer (pH6.0) for 15min; Block endogenous peroxidase by 3% hydrogen peroxide for 20 minutes; Blocking buffer (normal goat serum) at 37°C for 30min; Antibody incubation with (SCGF) Polyclonal Antibody, Unconjugated (AP56646) at 1:400 overnight at 4°C, followed by operating according to SP Kit(Rabbit) (sp-0023) instructions and DAB staining.

Please note: All products are 'FOR RESEARCH USE ONLY. NOT FOR USE IN DIAGNOSTIC OR THERAPEUTIC PROCEDURES'.