

SFRS5 Polyclonal Antibody

Purified Rabbit Polyclonal Antibody (Pab)

Catalog # AP56652

Product Information

Application	IHC-P, IHC-F, IF, ICC, E
Primary Accession	Q13243
Reactivity	Rat, Pig, Dog, Bovine
Host	Rabbit
Clonality	Polyclonal
Calculated MW	31264
Physical State	Liquid
Immunogen	KLH conjugated synthetic peptide derived from human SFRS5
Epitope Specificity	171-272/272
Isotype	IgG
Purity	affinity purified by Protein A
Buffer	0.01M TBS (pH7.4) with 1% BSA, 0.02% Proclin300 and 50% Glycerol.
SUBCELLULAR LOCATION	Nuclear
Important Note	This product as supplied is intended for research use only, not for use in human, therapeutic or diagnostic applications.
Background Descriptions	The protein encoded by this gene is a member of the serine/arginine (SR)-rich family of pre-mRNA splicing factors, which constitute part of the spliceosome. Each of these factors contains an RNA recognition motif (RRM) for binding RNA and an RS domain for binding other proteins. The RS domain is rich in serine and arginine residues and facilitates interaction between different SR splicing factors. In addition to being critical for mRNA splicing, the SR proteins have also been shown to be involved in mRNA export from the nucleus and in translation. Two transcript variants encoding the same protein have been found for this gene. [provided by RefSeq, Sep 2010]

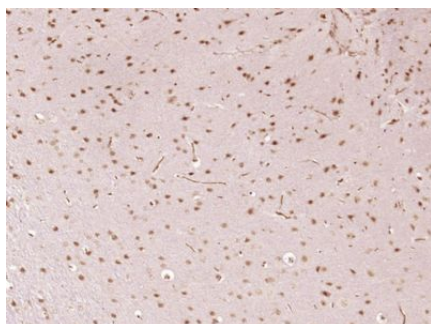
Additional Information

Gene ID	6430
Other Names	Serine/arginine-rich splicing factor 5, Delayed-early protein HRS, Pre-mRNA-splicing factor SRP40, Splicing factor, arginine/serine-rich 5, SRSF5, HRS, SFRS5, SRP40
Dilution	IHC-P=1:100-500,IHC-F=1:100-500,ICC=1:100-500,IF=1:100-500,ELISA=1:5000-10000
Format	0.01M TBS(pH7.4) with 1% BSA, 0.09% (W/V) sodium azide and 50% Glyce
Storage	Store at -20 °C for one year. Avoid repeated freeze/thaw cycles. When reconstituted in sterile pH 7.4 0.01M PBS or diluent of antibody the antibody is stable for at least two weeks at 2-4 °C.

Protein Information

Name	SRSF5
Synonyms	HRS, SFRS5, SRP40
Function	Plays a role in constitutive splicing and can modulate the selection of alternative splice sites.
Cellular Location	Nucleus.

Images



Paraformaldehyde-fixed, paraffin embedded (Mouse brain); Antigen retrieval by boiling in sodium citrate buffer (pH6.0) for 15min; Block endogenous peroxidase by 3% hydrogen peroxide for 20 minutes; Blocking buffer (normal goat serum) at 37°C for 30min; Antibody incubation with (SFRS5) Polyclonal Antibody, Unconjugated (AP56652) at 1:400 overnight at 4°C, followed by operating according to SP Kit(Rabbit) (sp-0023) instructions and DAB staining.

Please note: All products are 'FOR RESEARCH USE ONLY. NOT FOR USE IN DIAGNOSTIC OR THERAPEUTIC PROCEDURES'.