

HKDC1 Polyclonal Antibody

Purified Rabbit Polyclonal Antibody (Pab)

Catalog # AP56703

Product Information

Application	IHC-P, IHC-F, IF, ICC
Primary Accession	Q2TB90
Reactivity	Rat, Pig, Dog, Bovine
Host	Rabbit
Clonality	Polyclonal
Calculated MW	102545
Physical State	Liquid
Immunogen	KLH conjugated synthetic peptide derived from human HKDC1
Epitope Specificity	21-120/917
Isotype	IgG
Purity	affinity purified by Protein A
Buffer	0.01M TBS (pH7.4) with 1% BSA, 0.02% Proclin300 and 50% Glycerol.
SIMILARITY	Belongs to the hexokinase family.
Important Note	This product as supplied is intended for research use only, not for use in human, therapeutic or diagnostic applications.

Additional Information

Gene ID	80201
Other Names	Hexokinase HKDC1, 2.7.1.1, Hexokinase domain-containing protein 1, HKDC1 (HGNC:23302)
Dilution	IHC-P=1:100-500,IHC-F=1:100-500,ICC=1:100-500,IF=1:100-500
Format	0.01M TBS(pH7.4) with 1% BSA, 0.09% (W/V) sodium azide and 50% Glyce
Storage	Store at -20 °C for one year. Avoid repeated freeze/thaw cycles. When reconstituted in sterile pH 7.4 0.01M PBS or diluent of antibody the antibody is stable for at least two weeks at 2-4 °C.

Protein Information

Name	HKDC1 (HGNC:23302)
Function	Catalyzes the phosphorylation of hexose to hexose 6- phosphate, although at very low level compared to other hexokinases (PubMed: 30517626). Has low glucose phosphorylating activity compared to other hexokinases (PubMed: 30517626). Involved in glucose homeostasis and hepatic lipid accumulation. Required to maintain whole-body glucose homeostasis during

pregnancy; however additional evidences are required to confirm this role (By similarity).

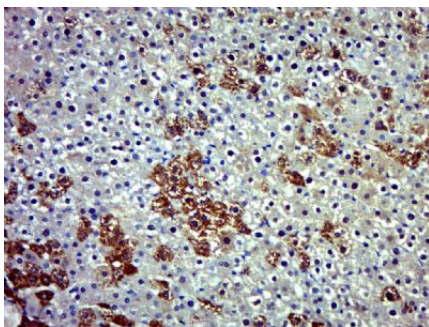
Cellular Location

Cytoplasm. Mitochondrion membrane; Peripheral membrane protein. Photoreceptor inner segment {ECO:0000250|UniProtKB:Q91W97}. Note=The mitochondrial-binding peptide (MBP) region promotes association with the mitochondrion

Tissue Location

Widely expressed (PubMed:27459389, PubMed:29401404). Highly expressed in the brush border, surface epithelium and the myenteric plexus of the small and large intestines; the acinar centrocytes and interlobular ducts of the pancreas; and the alveolar macrophages in the lungs (at protein level) (PubMed:29401404) Present at moderate level in the thyroid follicular epithelium (at protein level) (PubMed:29401404).

Images



Paraformaldehyde-fixed, paraffin embedded (Rat liver); Antigen retrieval by boiling in sodium citrate buffer (pH6.0) for 15min; Block endogenous peroxidase by 3% hydrogen peroxide for 20 minutes; Blocking buffer (normal goat serum) at 37°C for 30min; Antibody incubation with (HKDC1) Polyclonal Antibody, Unconjugated (AP56703) at 1:500 overnight at 4°C, followed by a conjugated secondary (sp-0023) for 20 minutes and DAB staining.

Please note: All products are 'FOR RESEARCH USE ONLY. NOT FOR USE IN DIAGNOSTIC OR THERAPEUTIC PROCEDURES'.