

# OTOL1 Rabbit pAb

OTOL1 Rabbit pAb  
Catalog # AP56738

## Product Information

---

<b>Application</b>	WB
<b>Primary Accession</b>	<a href="#">A6NHNO</a>
<b>Reactivity</b>	Human
<b>Predicted</b>	Mouse, Rat
<b>Host</b>	Rabbit
<b>Clonality</b>	Polyclonal
<b>Calculated MW</b>	49422
<b>Physical State</b>	Liquid
<b>Immunogen</b>	KLH conjugated synthetic peptide derived from human OTOL1
<b>Epitope Specificity</b>	361-460/477
<b>Isotype</b>	IgG
<b>Purity</b>	affinity purified by Protein A
<b>Buffer</b>	0.01M TBS (pH7.4) with 1% BSA, 0.02% Proclin300 and 50% Glycerol.
<b>SUBCELLULAR LOCATION</b>	Secreted.
<b>SIMILARITY</b>	Belongs to the OTOL1 family. Contains 1 C1q domain. Contains 3 collagen-like domains.
<b>Important Note</b>	This product as supplied is intended for research use only, not for use in human, therapeutic or diagnostic applications.

## Additional Information

---

<b>Gene ID</b>	131149
<b>Other Names</b>	Otolin-1, OTOL1 ( <a href="#">HGNC:34071</a> )
<b>Dilution</b>	WB=1:500-2000
<b>Storage</b>	Store at -20 °C for one year. Avoid repeated freeze/thaw cycles. When reconstituted in sterile pH 7.4 0.01M PBS or diluent of antibody the antibody is stable for at least two weeks at 2-4 °C.

## Protein Information

---

<b>Name</b>	OTOL1 ( <a href="#">HGNC:34071</a> )
<b>Function</b>	Collagen-like protein specifically expressed in the inner ear, which provides an organic scaffold for otoconia, a calcium carbonate structure in the saccule and utricle of the ear. Acts as a scaffold for biomineralization: sequesters calcium and forms interconnecting fibrils between otoconia that are incorporated into the calcium crystal structure. Together with OC90,

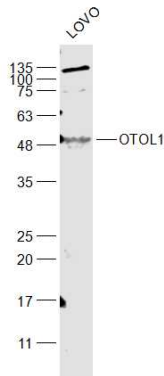
modulates calcite crystal morphology and growth kinetics.

## Cellular Location

Secreted, extracellular space, extracellular matrix  
{ECO:0000250|UniProtKB:Q4ZJM7}. Note=Localized in both the surrounding otoconial matrix and otoconia {ECO:0000250|UniProtKB:Q4ZJM7}

## Images

---



### Sample:

LOVO(Human) Cell Lysate at 30 ug

Primary: Anti-OTOL1 (AP56738) at 1/1000 dilution

Secondary: IRDye800CW Goat Anti-Rabbit IgG at 1/20000 dilution

Predicted band size: 47 kD

Observed band size: 49 kD

Please note: All products are 'FOR RESEARCH USE ONLY. NOT FOR USE IN DIAGNOSTIC OR THERAPEUTIC PROCEDURES'.