

OXA1L Polyclonal Antibody

Purified Rabbit Polyclonal Antibody (Pab)

Catalog # AP56747

Product Information

Application	WB, IHC-P, IHC-F, IF, ICC, E
Primary Accession	Q15070
Reactivity	Rat
Host	Rabbit
Clonality	Polyclonal
Calculated MW	48520
Physical State	Liquid
Immunogen	KLH conjugated synthetic peptide derived from human OXA1L
Epitope Specificity	301-400/435
Isotype	IgG
Purity	affinity purified by Protein A
Buffer	0.01M TBS (pH7.4) with 1% BSA, 0.02% Proclin300 and 50% Glycerol.
SUBCELLULAR LOCATION	Mitochondrion inner membrane.
SIMILARITY	Belongs to the OXA1/ALB3/YidC family.
Important Note	This product as supplied is intended for research use only, not for use in human, therapeutic or diagnostic applications.
Background Descriptions	Required for the insertion of integral membrane proteins into the mitochondrial inner membrane. Essential for the activity and assembly of cytochrome oxidase. Required for the correct biogenesis of ATP synthase and complex I in mitochondria.

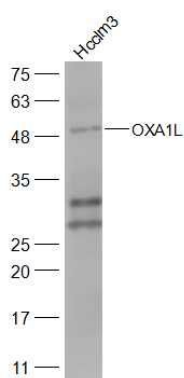
Additional Information

Gene ID	5018
Other Names	Mitochondrial inner membrane protein OXA1L, Hsa, OXA1Hs, Oxidase assembly 1-like protein, OXA1-like protein, OXA1L
Dilution	WB=1:500-2000,IHC-P=1:100-500,IHC-F=1:100-500,ICC=1:100-500,IF=1:100-500,ELISA=1:5000-10000
Format	0.01M TBS(pH7.4) with 1% BSA, 0.09% (W/V) sodium azide and 50% Glyce
Storage	Store at -20 °C for one year. Avoid repeated freeze/thaw cycles. When reconstituted in sterile pH 7.4 0.01M PBS or diluent of antibody the antibody is stable for at least two weeks at 2-4 °C.

Protein Information

Name	OXA1L {ECO:0000303 PubMed:9247084, ECO:0000312 HGNC:HGNC:8526}
Function	Mitochondrial membrane insertase that mediates the cotranslational insertion of integral membrane proteins into the mitochondrial inner membrane (PubMed: 17936786 , PubMed: 33602856 , PubMed: 7991568). Essential for the activity and assembly of cytochrome oxidase (PubMed: 17936786 , PubMed: 7991568). Required for the correct biogenesis of ATP synthase and complex I in mitochondria (PubMed: 17936786 , PubMed: 7991568).
Cellular Location	Mitochondrion inner membrane; Multi-pass membrane protein

Images



Sample:

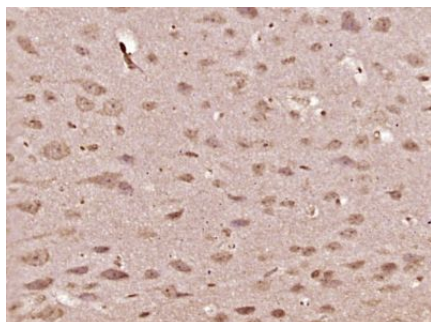
Hcclm3(Human) Cell Lysate at 30 ug

Primary: Anti-OXA1L (AP56747) at 1/300 dilution

Secondary: IRDye800CW Goat Anti-Rabbit IgG at 1/20000 dilution

Predicted band size: 49 kD

Observed band size: 49 kD



Paraformaldehyde-fixed, paraffin embedded (mouse brain tissue); Antigen retrieval by boiling in sodium citrate buffer (pH6.0) for 15min; Block endogenous peroxidase by 3% hydrogen peroxide for 20 minutes; Blocking buffer (normal goat serum) at 37°C for 30min; Antibody incubation with (OXA1L) Polyclonal Antibody, Unconjugated (AP56747) at 1:400 overnight at 4°C, followed by operating according to SP Kit(Rabbit) (sp-0023) instructions and DAB staining.

Please note: All products are 'FOR RESEARCH USE ONLY. NOT FOR USE IN DIAGNOSTIC OR THERAPEUTIC PROCEDURES'.