

# MMP6/MPHOSPH6 Polyclonal Antibody

Purified Rabbit Polyclonal Antibody (Pab)

Catalog # AP56795

## Product Information

---

<b>Application</b>	IHC-P, IHC-F, IF, ICC
<b>Primary Accession</b>	<a href="#">Q99547</a>
<b>Reactivity</b>	Rat, Bovine
<b>Host</b>	Rabbit
<b>Clonality</b>	Polyclonal
<b>Calculated MW</b>	19024
<b>Physical State</b>	Liquid
<b>Immunogen</b>	KLH conjugated synthetic peptide derived from human MPP6
<b>Epitope Specificity</b>	1-80/160
<b>Isotype</b>	IgG
<b>Purity</b>	affinity purified by Protein A
<b>Buffer</b>	0.01M TBS (pH7.4) with 1% BSA, 0.02% Proclin300 and 50% Glycerol.
<b>SUBCELLULAR LOCATION</b>	Nucleus > nucleolus. Cytoplasm. Cytoplasmic in M phase.
<b>SIMILARITY</b>	Belongs to the MPP6 family.
<b>SUBUNIT</b>	Associates with the RNA exosome complex, probably mediated by EXOSC10. Interacts with ARHGAP18, EXOSC10 and SKIV2L2.
<b>Post-translational modifications</b>	Phosphorylated in M (mitotic) phase.
<b>Important Note</b>	This product as supplied is intended for research use only, not for use in human, therapeutic or diagnostic applications.
<b>Background Descriptions</b>	MPHOSPH6 (M-Phase Phosphoprotein 6) is a Protein Coding gene. Among its related pathways are rRNA processing in the nucleus and cytosol and Gene Expression. Gene Ontology (GO) annotations related to this gene include RNA binding.

## Additional Information

---

<b>Gene ID</b>	10200
<b>Other Names</b>	M-phase phosphoprotein 6, MPHOSPH6 ( <a href="#">HGNC:7214</a> )
<b>Dilution</b>	IHC-P=1:100-500,IHC-F=1:100-500,ICC=1:100-500,IF=1:100-500
<b>Format</b>	0.01M TBS(pH7.4) with 1% BSA, 0.09% (W/V) sodium azide and 50% Glyce
<b>Storage</b>	Store at -20 °C for one year. Avoid repeated freeze/thaw cycles. When reconstituted in sterile pH 7.4 0.01M PBS or diluent of antibody the antibody is stable for at least two weeks at 2-4 °C.

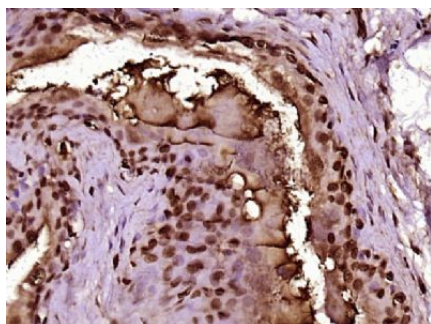
## Protein Information

---

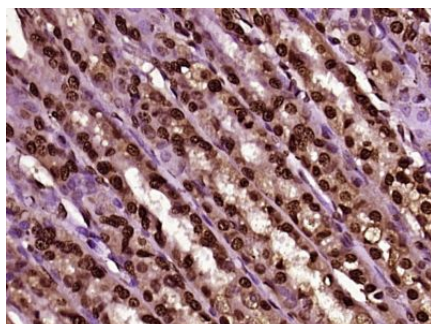
<b>Name</b>	MPHOSPH6 ( <a href="#">HGNC:7214</a> )
<b>Function</b>	RNA-binding protein that associates with the RNA exosome complex. Involved in the 3'-processing of the 7S pre-rRNA to the mature 5.8S rRNA and play a role in recruiting the RNA exosome complex to pre- rRNA; this function may include C1D.
<b>Cellular Location</b>	Nucleus, nucleolus. Cytoplasm. Note=Cytoplasmic in M phase

## Images

---



Paraformaldehyde-fixed, paraffin embedded (Rat urinary bladder); Antigen retrieval by boiling in sodium citrate buffer (pH6.0) for 15min; Block endogenous peroxidase by 3% hydrogen peroxide for 20 minutes; Blocking buffer (normal goat serum) at 37°C for 30min; Antibody incubation with (MMP6/MPHOSPH6) Polyclonal Antibody, Unconjugated (AP56795) at 1:400 overnight at 4°C, followed by operating according to SP Kit(Rabbit) (sp-0023) instructions and DAB staining.



Paraformaldehyde-fixed, paraffin embedded (Rat stomach); Antigen retrieval by boiling in sodium citrate buffer (pH6.0) for 15min; Block endogenous peroxidase by 3% hydrogen peroxide for 20 minutes; Blocking buffer (normal goat serum) at 37°C for 30min; Antibody incubation with (MMP6/MPHOSPH6) Polyclonal Antibody, Unconjugated (AP56795) at 1:400 overnight at 4°C, followed by operating according to SP Kit(Rabbit) (sp-0023) instructions and DAB staining.

Please note: All products are 'FOR RESEARCH USE ONLY. NOT FOR USE IN DIAGNOSTIC OR THERAPEUTIC PROCEDURES'.