

# MRFAP1L1 Rabbit pAb

MRFAP1L1 Rabbit pAb

Catalog # AP56818

## Product Information

---

<b>Application</b>	IHC-P, IHC-F, IF
<b>Primary Accession</b>	<a href="#">Q96HT8</a>
<b>Reactivity</b>	Human
<b>Host</b>	Rabbit
<b>Clonality</b>	Polyclonal
<b>Calculated MW</b>	14808
<b>Physical State</b>	Liquid
<b>Immunogen</b>	KLH conjugated synthetic peptide derived from human MRFAP1L1
<b>Epitope Specificity</b>	31-100/127
<b>Isotype</b>	IgG
<b>Purity</b>	affinity purified by Protein A
<b>Buffer</b>	0.01M TBS (pH7.4) with 1% BSA, 0.02% Proclin300 and 50% Glycerol.
<b>SUBCELLULAR LOCATION</b>	Membrane
<b>SIMILARITY</b>	Belongs to the MORF4 family-associated protein family.
<b>SUBUNIT</b>	Interacts with the GTP-bound form of RALA, RALB, CDC42 and RAC1. Interacts with REPS1 and REPS2 and this does not affect the Ral-binding activity. Interacts with DAB2IP. Interacts with catalytically active CCNB1 and CDK1 during mitosis. Interacts with EPN1, NUMB and TFAP2A during interphase and mitosis.
<b>Important Note</b>	This product as supplied is intended for research use only, not for use in human, therapeutic or diagnostic applications.
<b>Background Descriptions</b>	The members of the mortality factor family include mortality factor 4 (MORF4), MORF4L1 (also known as MRG15) and MORF4-related gene X (MRGX). The human MORF4 gene maps to chromosome 4q33-q34.1. MORF4 induces a senescent-like phenotype in complementation group B immortal cell lines. MORF4 family-associated protein 1 (MRFAP1), also known as GAM14 or PGR1, is a 127 amino acid member of the MORF4 family-associated protein family. Localized to nucleus and cytoplasm, MRFAP1 colocalizes with MORF4L1 to the cell nuclei. Its association with MORF4L1 and Rb1 suggests that MRFAP1 may play a role in transcription regulation. The gene encoding human MRFAP1 maps to chromosome 4p16.1.

## Additional Information

---

<b>Gene ID</b>	114932
<b>Other Names</b>	MORF4 family-associated protein 1-like 1, MRFAP1L1
<b>Target/Specificity</b>	Expressed ubiquitously but at low levels. Shows a strong expression in the erythrocytes.

<b>Dilution</b>	IHC-P=1:100-500,IHC-F=1:100-500,IF=1:100-500
<b>Storage</b>	Store at -20 °C for one year. Avoid repeated freeze/thaw cycles. When reconstituted in sterile pH 7.4 0.01M PBS or diluent of antibody the antibody is stable for at least two weeks at 2-4 °C.

## Protein Information

---

**Name** MRFAP1L1

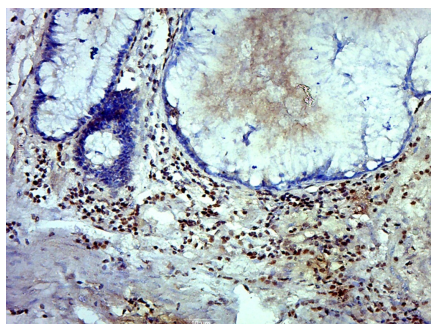
## Background

---

The members of the mortality factor family include mortality factor 4 (MORF4), MORF4L1 (also known as MRG15) and MORF4-related gene X (MRGX). The human MORF4 gene maps to chromosome 4q33-q34.1. MORF4 induces a senescent-like phenotype in complementation group B immortal cell lines. MORF4 family-associated protein 1 (MRFAP1), also known as GAM14 or PGR1, is a 127 amino acid member of the MORF4 family-associated protein family. Localized to nucleus and cytoplasm, MRFAP1 colocalizes with MORF4L1 to the cell nuclei. Its association with MORF4L1 and Rb1 suggests that MRFAP1 may play a role in transcription regulation. The gene encoding human MRFAP1 maps to chromosome 4p16.1.

## Images

---



Paraformaldehyde-fixed, paraffin embedded (Human colon carcinoma); Antigen retrieval by boiling in sodium citrate buffer (pH6.0) for 15min; Block endogenous peroxidase by 3% hydrogen peroxide for 20 minutes; Blocking buffer (normal goat serum) at 37°C for 30min; Antibody incubation with (MRFAP1L1) Polyclonal Antibody, Unconjugated (AP56818) at 1:500 overnight at 4°C, followed by a conjugated secondary (sp-0023) for 20 minutes and DAB staining.

Please note: All products are 'FOR RESEARCH USE ONLY. NOT FOR USE IN DIAGNOSTIC OR THERAPEUTIC PROCEDURES'.