

NPTN Polyclonal Antibody

Purified Rabbit Polyclonal Antibody (Pab)

Catalog # AP56921

Product Information

Application	WB, IHC-P, IHC-F, IF, E
Primary Accession	Q9Y639
Reactivity	Rat, Pig, Dog, Bovine
Host	Rabbit
Clonality	Polyclonal
Calculated MW	44387
Physical State	Liquid
Immunogen	KLH conjugated synthetic peptide derived from human NPTN
Epitope Specificity	51-150/298
Isotype	IgG
Purity	affinity purified by Protein A
Buffer	0.01M TBS (pH7.4) with 1% BSA, 0.02% Proclin300 and 50% Glycerol.
SUBCELLULAR LOCATION	Cell membrane; Single-pass type I membrane protein (Potential). Note=Enriched at postsynaptic density (By similarity).
SIMILARITY	Contains 3 Ig-like (immunoglobulin-like) domains.
Important Note	This product as supplied is intended for research use only, not for use in human, therapeutic or diagnostic applications.
Background Descriptions	This gene encodes a type I transmembrane protein belonging to the Ig superfamily. The protein is believed to be involved in cell-cell interactions or cell-substrate interactions. Alternative splicing results in multiple transcript variants. [provided by RefSeq, May 2009]

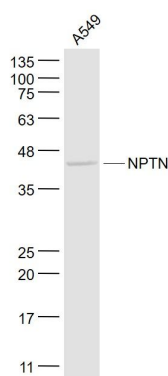
Additional Information

Gene ID	27020
Other Names	Neuroplastin, Stromal cell-derived receptor 1, SDR-1, NPTN, SDFR1, SDR1
Target/Specificity	Isoform 1 is ubiquitously expressed. Isoform 2 is expressed in brain cortex and cerebellum (at protein level).
Dilution	WB=1:500-2000,IHC-P=1:100-500,IHC-F=1:100-500,IF=1:100-500,ELISA=1:5000-10000
Format	0.01M TBS(pH7.4) with 1% BSA, 0.09% (W/V) sodium azide and 50% Glyce
Storage	Store at -20 °C for one year. Avoid repeated freeze/thaw cycles. When reconstituted in sterile pH 7.4 0.01M PBS or diluent of antibody the antibody is stable for at least two weeks at 2-4 °C.

Protein Information

Name	NPTN
Synonyms	SDFR1, SDR1
Function	Probable homophilic and heterophilic cell adhesion molecule involved in long term potentiation at hippocampal excitatory synapses through activation of p38MAPK. May also regulate neurite outgrowth by activating the FGFR1 signaling pathway. May play a role in synaptic plasticity (By similarity). Also acts as a chaperone for ATP2B1; stabilizes ATP2B1 and increases its ATPase activity (PubMed: 30190470). Promotes localization of XKR8 at the cell membrane (PubMed: 27503893).
Cellular Location	Cell membrane {ECO:0000250 UniProtKB:P97546}; Single-pass type I membrane protein {ECO:0000250 UniProtKB:P97546}
Tissue Location	Isoform 1 is ubiquitously expressed. Isoform 2 is expressed in brain cortex and cerebellum (at protein level) {ECO:0000269 PubMed:17196182, ECO:0000269 Ref.1}

Images



Sample:
A549(Human) Cell Lysate at 30 ug
Primary: Anti- NPTN (AP56921) at 1/1000 dilution
Secondary: IRDye800CW Goat Anti-Rabbit IgG at 1/20000 dilution
Predicted band size: 42 kD
Observed band size: 42 kD

Please note: All products are 'FOR RESEARCH USE ONLY. NOT FOR USE IN DIAGNOSTIC OR THERAPEUTIC PROCEDURES'.