

LIMCH1 Polyclonal Antibody

Purified Rabbit Polyclonal Antibody (Pab)

Catalog # AP57015

Product Information

Application	IHC-P, IHC-F, IF, ICC
Primary Accession	Q9UPQ0
Reactivity	Rat, Pig, Dog, Bovine
Host	Rabbit
Clonality	Polyclonal
Calculated MW	121867
Physical State	Liquid
Immunogen	KLH conjugated synthetic peptide derived from human LIMCH1
Epitope Specificity	201-300/1083
Isotype	IgG
Purity	affinity purified by Protein A
Buffer	0.01M TBS (pH7.4) with 1% BSA, 0.02% Proclin300 and 50% Glycerol.
SIMILARITY	Belongs to the LIMCH1 family. Contains 1 CH (calponin-homology) domain. Contains 1 LIM zinc-binding domain.
Important Note	This product as supplied is intended for research use only, not for use in human, therapeutic or diagnostic applications.

Additional Information

Gene ID	22998
Other Names	LIM and calponin homology domains-containing protein 1, LIMCH1 (HGNC:29191)
Dilution	IHC-P=1:100-500,IHC-F=1:100-500,ICC=1:100-500,IF=1:100-500
Format	0.01M TBS(pH7.4) with 1% BSA, 0.09% (W/V) sodium azide and 50% Glyce
Storage	Store at -20 °C for one year. Avoid repeated freeze/thaw cycles. When reconstituted in sterile pH 7.4 0.01M PBS or diluent of antibody the antibody is stable for at least two weeks at 2-4 °C.

Protein Information

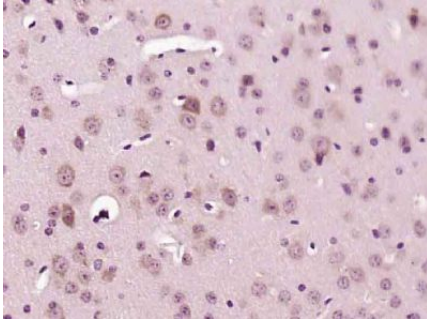
Name	LIMCH1 (HGNC:29191)
Function	Actin stress fibers-associated protein that activates non- muscle myosin IIa. Activates the non-muscle myosin IIa complex by promoting the phosphorylation of its regulatory subunit MRLC/MYL9. Through the activation of non-muscle myosin IIa, positively regulates actin stress fibers assembly

and stabilizes focal adhesions. It therefore negatively regulates cell spreading and cell migration.

Cellular Location

Cytoplasm, cytoskeleton, stress fiber

Images



Paraformaldehyde-fixed, paraffin embedded (Mouse brain); Antigen retrieval by boiling in sodium citrate buffer (pH6.0) for 15min; Block endogenous peroxidase by 3% hydrogen peroxide for 20 minutes; Blocking buffer (normal goat serum) at 37°C for 30min; Antibody incubation with (LIMCH1) Polyclonal Antibody, Unconjugated (AP57015) at 1:500 overnight at 4°C, followed by a conjugated secondary (sp-0023) for 20 minutes and DAB staining.

Please note: All products are 'FOR RESEARCH USE ONLY. NOT FOR USE IN DIAGNOSTIC OR THERAPEUTIC PROCEDURES'.