

APOBEC2 Antibody (N-term)

Affinity Purified Rabbit Polyclonal Antibody (Pab)

Catalog # AP5701a

Product Information

Application	WB, FC, IHC-P, E
Primary Accession	Q9Y235
Other Accession	Q3SYR3 , NP_006780.1
Reactivity	Human, Mouse
Predicted	Bovine
Host	Rabbit
Clonality	Polyclonal
Isotype	Rabbit IgG
Clone Names	RB25184
Calculated MW	25703
Antigen Region	19-48

Additional Information

Gene ID	10930
Other Names	Probable C->U-editing enzyme APOBEC-2, 354-, APOBEC2
Target/Specificity	This APOBEC2 antibody is generated from rabbits immunized with a KLH conjugated synthetic peptide between 19-48 amino acids from the N-terminal region of human APOBEC2.
Dilution	WB~~1:1000 FC~~1:10~50 IHC-P~~1:100~500 E~~Use at an assay dependent concentration.
Format	Purified polyclonal antibody supplied in PBS with 0.09% (W/V) sodium azide. This antibody is purified through a protein A column, followed by peptide affinity purification.
Storage	Maintain refrigerated at 2-8°C for up to 2 weeks. For long term storage store at -20°C in small aliquots to prevent freeze-thaw cycles.
Precautions	APOBEC2 Antibody (N-term) is for research use only and not for use in diagnostic or therapeutic procedures.

Protein Information

Name	APOBEC2
Function	Probable C to U editing enzyme whose physiological substrate is not yet known. Does not display detectable apoB mRNA editing. Has a low intrinsic

cytidine deaminase activity. May play a role in the epigenetic regulation of gene expression through the process of active DNA demethylation.

Tissue Location

Expressed exclusively in heart and skeletal muscle.

Background

APOBEC2 belongs to the cytidine and deoxycytidylate deaminase family. It is probable C to U editing enzyme whose physiological substrate is not yet known. It does not display detectable apoB mRNA editing and has a low intrinsic cytidine deaminase activity.

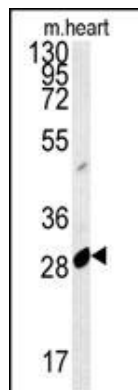
References

Liao, W., et al. Biochem. Biophys. Res. Commun. 260(2):398-404(1999)

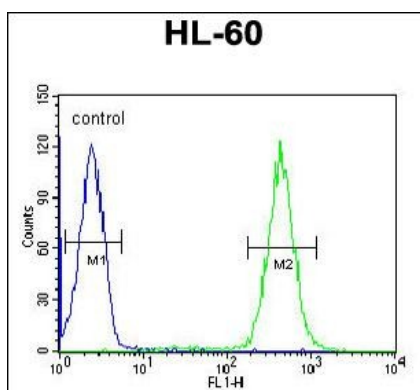
Oka, K., et al. J. Biol. Chem. 272(3):1456-1460(1997)

Lau, P.P., et al. Proc. Natl. Acad. Sci. U.S.A. 91(18):8522-8526(1994)

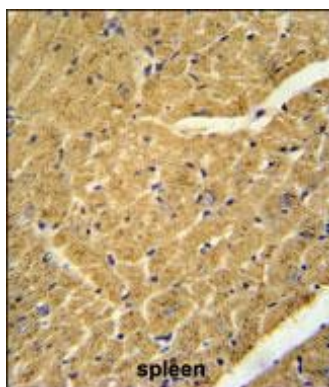
Images



APOBEC2 Antibody (N-term) (Cat. #AP5701a) western blot analysis in mouse heart tissue lysates (15ug/lane). This demonstrates the APOBEC2 antibody detected APOBEC2 protein (arrow).



APOBEC2 Antibody (N-term) (Cat. #AP5701a) flow cytometric analysis of HL-60 cells (right histogram) compared to a negative control cell (left histogram). FITC-conjugated goat-anti-rabbit secondary antibodies were used for the analysis.



APOBEC2 Antibody (N-term) (Cat. #AP5701a) immunohistochemistry analysis in formalin fixed and paraffin embedded mouse heart tissue followed by peroxidase conjugation of the secondary antibody and DAB staining. This data demonstrates the use of the APOBEC2 Antibody (N-term) for immunohistochemistry. Clinical relevance has not been evaluated.

Please note: All products are 'FOR RESEARCH USE ONLY. NOT FOR USE IN DIAGNOSTIC OR THERAPEUTIC PROCEDURES'.