

LIPJ/Lipase J Rabbit pAb

LIPJ/Lipase J Rabbit pAb

Catalog # AP57023

Product Information

Application	WB
Primary Accession	Q5W064
Reactivity	Human
Predicted	Rabbit
Host	Rabbit
Clonality	Polyclonal
Calculated MW	42388
Physical State	Liquid
Immunogen	KLH conjugated synthetic peptide derived from human LIPJ/Lipase J
Epitope Specificity	151-250/366
Isotype	IgG
Purity	affinity purified by Protein A
Buffer	0.01M TBS (pH7.4) with 1% BSA, 0.02% Proclin300 and 50% Glycerol.
SIMILARITY	Belongs to the AB hydrolase superfamily. Lipase family.
Important Note	This product as supplied is intended for research use only, not for use in human, therapeutic or diagnostic applications.

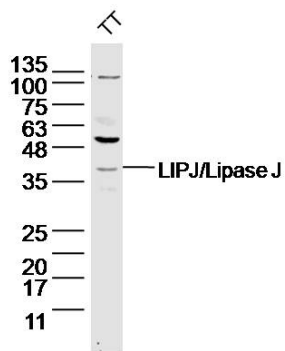
Additional Information

Gene ID	142910
Other Names	Lipase member J, 3.1.1.-, Lipase-like abhydrolase domain-containing protein 1, LIPJ, LIPL1
Dilution	WB=1:500-2000
Storage	Store at -20 °C for one year. Avoid repeated freeze/thaw cycles. When reconstituted in sterile pH 7.4 0.01M PBS or diluent of antibody the antibody is stable for at least two weeks at 2-4 °C.

Protein Information

Name	LIPJ
Synonyms	LIPL1

Images



Sample: TT Cell (Human) Lysate at 40 ug
Primary: Anti- LIPJ/Lipase J (AP57023) at 1/300 dilution
Secondary: IRDye800CW Goat Anti-Rabbit IgG at 1/20000 dilution
Predicted band size: 42 kD
Observed band size: 42 kD

Please note: All products are 'FOR RESEARCH USE ONLY. NOT FOR USE IN DIAGNOSTIC OR THERAPEUTIC PROCEDURES'.