

LMAN1L Rabbit pAb

LMAN1L Rabbit pAb

Catalog # AP57030

Product Information

Application	WB, IHC-P, IHC-F, IF
Primary Accession	Q9HAT1
Reactivity	Mouse
Predicted	Human, Rat, Dog, Pig, Horse, Sheep
Host	Rabbit
Clonality	Polyclonal
Calculated MW	57129
Physical State	Liquid
Immunogen	KLH conjugated synthetic peptide derived from human LMAN1L
Epitope Specificity	26-130/526
Isotype	IgG
Purity	affinity purified by Protein A
Buffer	0.01M TBS (pH7.4) with 1% BSA, 0.02% Proclin300 and 50% Glycerol.
SUBCELLULAR LOCATION	Endoplasmic reticulum-Golgi intermediate compartment membrane; Single-pass type I membrane protein.
Important Note	This product as supplied is intended for research use only, not for use in human, therapeutic or diagnostic applications.

Additional Information

Gene ID	79748
Other Names	Protein ERGIC-53-like, ERGIC53-like protein, Lectin mannose-binding 1-like, LMAN1-like protein, LMAN1L, ERGL
Dilution	WB=1:500-2000,IHC-P=1:100-500,IHC-F=1:100-500,IF=1:100-500
Storage	Store at -20 °C for one year. Avoid repeated freeze/thaw cycles. When reconstituted in sterile pH 7.4 0.01M PBS or diluent of antibody the antibody is stable for at least two weeks at 2-4 °C.

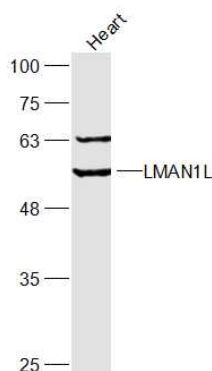
Protein Information

Name	LMAN1L
Synonyms	ERGL
Cellular Location	Endoplasmic reticulum-Golgi intermediate compartment membrane; Single-pass type I membrane protein

Tissue Location

Highly expressed in normal and neoplastic prostate. Also expressed in cardiac atrium, salivary gland, spleen and selective cells in the CNS.

Images



Sample:

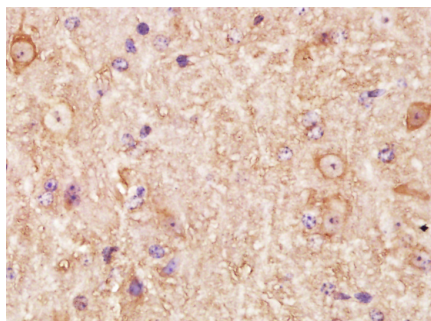
Heart (Mouse) Lysate at 40 ug

Primary: Anti-LMAN1L (AP57030) at 1/300 dilution

Secondary: IRDye800CW Goat Anti-Rabbit IgG at 1/20000 dilution

Predicted band size: 55 kD

Observed band size: 55 kD



Paraformaldehyde-fixed, paraffin embedded (Mouse brain); Antigen retrieval by boiling in sodium citrate buffer (pH6.0) for 15min; Block endogenous peroxidase by 3% hydrogen peroxide for 20 minutes; Blocking buffer (normal goat serum) at 37°C for 30min; Antibody incubation with (LMAN1L) Polyclonal Antibody, Unconjugated (AP57030) at 1:400 overnight at 4°C, followed by operating according to SP Kit(Rabbit) (sp-0023) instructions and DAB staining.

Please note: All products are 'FOR RESEARCH USE ONLY. NOT FOR USE IN DIAGNOSTIC OR THERAPEUTIC PROCEDURES'.