

LRRC17 Rabbit pAb

LRRC17 Rabbit pAb

Catalog # AP57064

Product Information

Application	WB
Primary Accession	Q8N6Y2
Reactivity	Mouse
Predicted	Human, Rat
Host	Rabbit
Clonality	Polyclonal
Calculated MW	51800
Physical State	Liquid
Immunogen	KLH conjugated synthetic peptide derived from human LRRC17
Epitope Specificity	331-430/441
Isotype	IgG
Purity	affinity purified by Protein A
Buffer	0.01M TBS (pH7.4) with 1% BSA, 0.02% Proclin300 and 50% Glycerol.
SUBCELLULAR LOCATION	Secreted; extracellular space.
SIMILARITY	Contains 6 LRR (leucine-rich) repeats. Contains 2 LRRCT domains. Contains 1 LRRNT domain.
Important Note	This product as supplied is intended for research use only, not for use in human, therapeutic or diagnostic applications.
Background Descriptions	LRRC17 is a 441 amino acid protein that localizes to the cytoplasm and contains six LRR repeats. The protein is expressed at high levels in ovary, heart, pancreas, skeletal muscle, lung, and fetal kidney and lung. LRRC17 is expressed at higher levels in non-neuronal (S-type) neuroblastoma cells than in neuroblastic (N-type) neuroblastoma cells.

Additional Information

Gene ID	10234
Other Names	Leucine-rich repeat-containing protein 17, p37NB, LRRC17, P37NB
Target/Specificity	Expressed in osteoblast cell lines. Well expressed in ovary, heart, pancreas, skeletal muscle, lung, and fetal kidney and lung and only at the basal levels in the other tissues examined including adult kidney. More expressed in S-type neuroblastoma cells than in N-type neuroblastoma cells.
Dilution	WB=1:500-2000
Storage	Store at -20 °C for one year. Avoid repeated freeze/thaw cycles. When reconstituted in sterile pH 7.4 0.01M PBS or diluent of antibody the antibody is stable for at least two weeks at 2-4 °C.

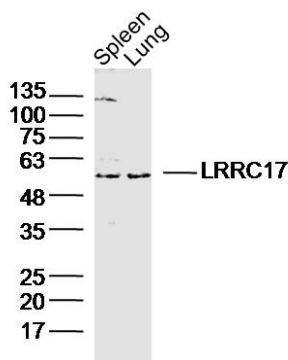
Protein Information

Name	LRRC17
Synonyms	P37NB
Function	Involved in bone homeostasis. Acts as a negative regulator of RANKL-induced osteoclast precursor differentiation from bone marrow precursors (By similarity).
Cellular Location	Secreted, extracellular space.
Tissue Location	Expressed in osteoblast cell lines. Well expressed in ovary, heart, pancreas, skeletal muscle, lung, and fetal kidney and lung and only at the basal levels in the other tissues examined including adult kidney. More expressed in S-type neuroblastoma cells than in N-type neuroblastoma cells.

Background

LRRC17 is a 441 amino acid protein that localizes to the cytoplasm and contains six LRR repeats. The protein is expressed at high levels in ovary, heart, pancreas, skeletal muscle, lung, and fetal kidney and lung. LRRC17 is expressed at higher levels in non-neuronal (S-type) neuroblastoma cells than in neuroblastic (N-type) neuroblastoma cells.

Images



Sample:

Spleen (Mouse) Lysate at 40 ug

Lung (Mouse) Lysate at 40 ug

Primary: Anti- LRRC17 (AP57064) at 1/300 dilution

Secondary: IRDye800CW Goat Anti-Rabbit IgG at 1/20000 dilution

Predicted band size: 50 kD

Observed band size: 50 kD

Please note: All products are 'FOR RESEARCH USE ONLY. NOT FOR USE IN DIAGNOSTIC OR THERAPEUTIC PROCEDURES'.