

# ZC3H15 Polyclonal Antibody

Purified Rabbit Polyclonal Antibody (Pab)

Catalog # AP57095

## Product Information

---

<b>Application</b>	WB, IHC-P, IHC-F, IF, ICC, E
<b>Primary Accession</b>	<a href="#">Q8WU90</a>
<b>Reactivity</b>	Rat, Pig, Dog, Bovine
<b>Host</b>	Rabbit
<b>Clonality</b>	Polyclonal
<b>Calculated MW</b>	48602

## Additional Information

---

<b>Gene ID</b>	55854
<b>Other Names</b>	Zinc finger CCCH domain-containing protein 15, DRG family-regulatory protein 1, Likely ortholog of mouse immediate early response erythropoietin 4, ZC3H15, DFRP1, LEREPO4
<b>Dilution</b>	WB=1:500-2000,IHC-P=1:100-500,IHC-F=1:100-500,ICC=1:100-500,IF=1:100-500,ELISA=1:5000-10000
<b>Storage</b>	Store at -20 °C for one year. Avoid repeated freeze/thaw cycles. When reconstituted in sterile pH 7.4 0.01M PBS or diluent of antibody the antibody is stable for at least two weeks at 2-4 °C.

## Protein Information

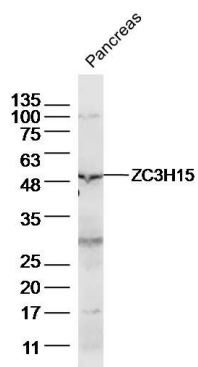
---

<b>Name</b>	ZC3H15
<b>Synonyms</b>	DFRP1, LEREPO4
<b>Function</b>	Protects DRG1 from proteolytic degradation (PubMed: <a href="#">19819225</a> ). Stimulates DRG1 GTPase activity likely by increasing the affinity for the potassium ions (PubMed: <a href="#">23711155</a> ).
<b>Cellular Location</b>	Cytoplasm. Nucleus. Note=The DRG1- DFRP2/ZC3H15 complex associates with polysomes

## Images

---

Sample: Pancreas (Mouse) Lysate at 40 ug  
Primary: Anti-ZC3H15 (AP57095) at 1/300 dilution



Secondary: IRDye800CW Goat Anti-Rabbit IgG at  
1/20000 dilution  
Predicted band size: 49 kD  
Observed band size: 49 kD

Please note: All products are 'FOR RESEARCH USE ONLY. NOT FOR USE IN DIAGNOSTIC OR THERAPEUTIC PROCEDURES'.