

ZDHHC8 Rabbit pAb

ZDHHC8 Rabbit pAb

Catalog # AP57109

Product Information

Application	IHC-P, IHC-F, IF
Primary Accession	Q9ULC8
Reactivity	Human, Mouse
Predicted	Rat, Dog, Pig, Horse, Rabbit
Host	Rabbit
Clonality	Polyclonal
Calculated MW	81443
Physical State	Liquid
Immunogen	KLH conjugated synthetic peptide derived from human ZDHHC8
Epitope Specificity	561-765/765
Isotype	IgG
Purity	affinity purified by Protein A
Buffer	0.01M TBS (pH7.4) with 1% BSA, 0.02% Proclin300 and 50% Glycerol.
SUBCELLULAR LOCATION	Golgi apparatus membrane; Multi-pass membrane protein. Mitochondrion membrane; Multi-pass membrane protein.
SIMILARITY	Belongs to the DHHC palmitoyltransferase family. ERF2/ZDHHC9 subfamily.
Important Note	This product as supplied is intended for research use only, not for use in human, therapeutic or diagnostic applications.
Background Descriptions	This gene encodes a four transmembrane protein that is a member of the zinc finger DHHC domain-containing protein family. The encoded protein may function as a palmitoyltransferase. Defects in this gene may be associated with a susceptibility to schizophrenia. Alternate splicing of this gene results in multiple transcript variants. A pseudogene of this gene is found on chromosome 22.[provided by RefSeq, May 2010]

Additional Information

Gene ID	29801
Other Names	Palmitoyltransferase ZDHHC8, 2.3.1.225, Zinc finger DHHC domain-containing protein 8 {ECO:0000312 HGNC:HGNC:18474}, DHHC-8, Zinc finger protein 378, ZDHHC8 (HGNC:18474)
Target/Specificity	Widely expressed.
Dilution	IHC-P=1:100-500,IHC-F=1:100-500,ICC/IF=1:100-500,IF=1:100-500
Storage	Store at -20 °C for one year. Avoid repeated freeze/thaw cycles. When reconstituted in sterile pH 7.4 0.01M PBS or diluent of antibody the antibody is stable for at least two weeks at 2-4 °C.

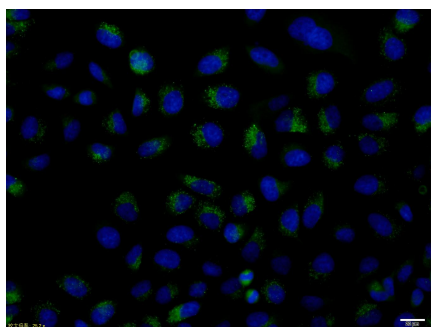
Protein Information

Name	ZDHHC8 (HGNC:18474)
Function	Palmitoyltransferase that catalyzes the addition of palmitate onto various protein substrates and therefore functions in several unrelated biological processes (Probable). Through the palmitoylation of ABCA1 regulates the localization of the transporter to the plasma membrane and thereby regulates its function in cholesterol and phospholipid efflux (Probable). Could also palmitoylate the D(2) dopamine receptor DRD2 and regulate its stability and localization to the plasma membrane (Probable). Could also play a role in glutamatergic transmission (By similarity).
Cellular Location	Golgi apparatus membrane; Multi-pass membrane protein. Mitochondrion membrane {ECO:0000250 UniProtKB:Q5Y5T5}; Multi-pass membrane protein
Tissue Location	Widely expressed..

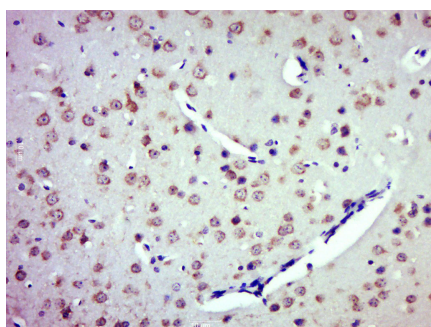
Background

This gene encodes a four transmembrane protein that is a member of the zinc finger DHHC domain-containing protein family. The encoded protein may function as a palmitoyltransferase. Defects in this gene may be associated with a susceptibility to schizophrenia. Alternate splicing of this gene results in multiple transcript variants. A pseudogene of this gene is found on chromosome 22.[provided by RefSeq, May 2010]

Images



Hela cell; 4% Paraformaldehyde-fixed; Triton X-100 at room temperature for 20 min; Blocking buffer (normal goat serum, C-0005) at 37°C for 20 min; Antibody incubation with (ZDHHC8/ZNF378) polyclonal Antibody, Unconjugated (AP57109) 1:100, 90 minutes at 37°C; followed by a conjugated Goat Anti-Rabbit IgG antibody at 37°C for 90 minutes, DAPI (blue, C02-04002) was used to stain the cell nuclei.



Paraformaldehyde-fixed, paraffin embedded (Mouse brain); Antigen retrieval by boiling in sodium citrate buffer (pH6.0) for 15min; Block endogenous peroxidase by 3% hydrogen peroxide for 20 minutes; Blocking buffer (normal goat serum) at 37°C for 30min; Antibody incubation with (ZDHHC8) Polyclonal Antibody, Unconjugated (AP57109) at 1:500 overnight at 4°C, followed by a conjugated secondary (sp-0023) for 20 minutes and DAB staining.

Please note: All products are 'FOR RESEARCH USE ONLY. NOT FOR USE IN DIAGNOSTIC OR THERAPEUTIC PROCEDURES'.