

LMA1L Antibody (Center)

Affinity Purified Rabbit Polyclonal Antibody (Pab)

Catalog # AP5714c

Product Information

Application	WB, FC, E
Primary Accession	Q9HAT1
Other Accession	NP_068591.2
Reactivity	Human
Host	Rabbit
Clonality	Polyclonal
Isotype	Rabbit IgG
Clone Names	RB26944
Calculated MW	57129
Antigen Region	279-308

Additional Information

Gene ID	79748
Other Names	Protein ERGIC-53-like, ERGIC53-like protein, Lectin mannose-binding 1-like, LMAN1-like protein, LMAN1L, ERGL
Target/Specificity	This LMA1L antibody is generated from rabbits immunized with a KLH conjugated synthetic peptide between 279-308 amino acids from the Central region of human LMA1L.
Dilution	WB~~1:1000 FC~~1:10~50 E~~Use at an assay dependent concentration.
Format	Purified polyclonal antibody supplied in PBS with 0.09% (W/V) sodium azide. This antibody is purified through a protein A column, followed by peptide affinity purification.
Storage	Maintain refrigerated at 2-8°C for up to 2 weeks. For long term storage store at -20°C in small aliquots to prevent freeze-thaw cycles.
Precautions	LMA1L Antibody (Center) is for research use only and not for use in diagnostic or therapeutic procedures.

Protein Information

Name	LMAN1L
Synonyms	ERGL
Cellular Location	Endoplasmic reticulum-Golgi intermediate compartment membrane;

Single-pass type I membrane protein

Tissue Location

Highly expressed in normal and neoplastic prostate. Also expressed in cardiac atrium, salivary gland, spleen and selective cells in the CNS.

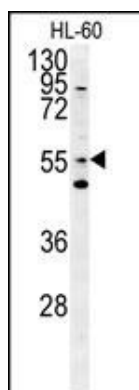
References

Clark, H.F., et al. Genome Res. 13(10):2265-2270(2003)

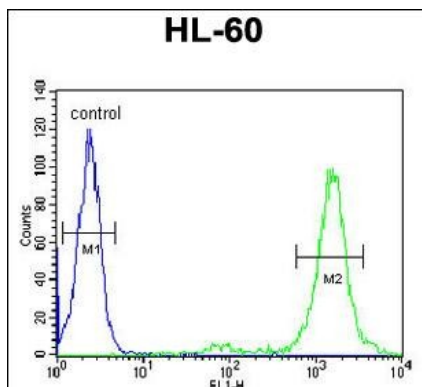
Ohira, M., et al. Cancer Lett. 197 (1-2), 63-68 (2003) :

Yerushalmi, N., et al. Gene 265 (1-2), 55-60 (2001) :

Images



LMA1L Antibody (Center) (Cat. #AP5714c) western blot analysis in HL-60 cell line lysates (15ug/lane). This demonstrates the LMA1L antibody detected the LMA1L protein (arrow).



LMA1L Antibody (Center) (Cat. #AP5714c) flow cytometric analysis of HL-60 cells (right histogram) compared to a negative control cell (left histogram). FITC-conjugated goat-anti-rabbit secondary antibodies were used for the analysis.

Please note: All products are 'FOR RESEARCH USE ONLY. NOT FOR USE IN DIAGNOSTIC OR THERAPEUTIC PROCEDURES'.