

ZCCHC9 Polyclonal Antibody

Purified Rabbit Polyclonal Antibody (Pab)

Catalog # AP57150

Product Information

Application	WB, IHC-P, IHC-F, IF, ICC, E
Primary Accession	Q8N567
Reactivity	Rat, Pig, Dog, Cat, Bovine
Host	Rabbit
Clonality	Polyclonal
Calculated MW	30477
Physical State	Liquid
Immunogen	KLH conjugated synthetic peptide derived from human ZCCHC9
Epitope Specificity	21-120/271
Isotype	IgG
Purity	affinity purified by Protein A
Buffer	0.01M TBS (pH7.4) with 1% BSA, 0.02% Proclin300 and 50% Glycerol.
SIMILARITY	Contains 4 CCHC-type zinc fingers.
Important Note	This product as supplied is intended for research use only, not for use in human, therapeutic or diagnostic applications.

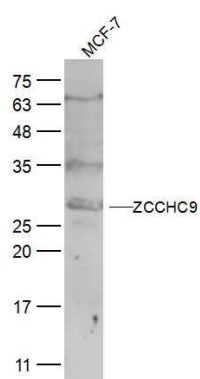
Additional Information

Gene ID	84240
Other Names	Zinc finger CCHC domain-containing protein 9, ZCCHC9
Dilution	WB=1:500-2000,IHC-P=1:100-500,IHC-F=1:100-500,ICC=1:100-500,IF=1:100-500,ELISA=1:5000-10000
Format	0.01M TBS(pH7.4) with 1% BSA, 0.09% (W/V) sodium azide and 50% Glyce
Storage	Store at -20 °C for one year. Avoid repeated freeze/thaw cycles. When reconstituted in sterile pH 7.4 0.01M PBS or diluent of antibody the antibody is stable for at least two weeks at 2-4 °C.

Protein Information

Name	ZCCHC9
Function	May down-regulate transcription mediated by NF-kappa-B and the serum response element.
Cellular Location	Nucleus, nucleolus. Nucleus. Note=Expressed throughout the nucleus and concentrated mainly in the nucleolus

Images



Sample:

MCF-7(Human) Cell Lysate at 30 ug

Primary: Anti-ZCCHC9 (AP57150) at 1/300 dilution

Secondary: IRDye800CW Goat Anti-Rabbit IgG at 1/20000 dilution

Predicted band size: 30 kD

Observed band size: 30 kD

Please note: All products are 'FOR RESEARCH USE ONLY. NOT FOR USE IN DIAGNOSTIC OR THERAPEUTIC PROCEDURES'.