

MACROD2/C20orf133 Polyclonal Antibody

Purified Rabbit Polyclonal Antibody (Pab)

Catalog # AP57174

Product Information

Application	IHC-P, IHC-F, IF, ICC, E
Primary Accession	A1Z1Q3
Reactivity	Human, Mouse
Host	Rabbit
Clonality	Polyclonal
Calculated MW	47421
Physical State	Liquid
Immunogen	KLH conjugated synthetic peptide derived from human MACROD2/C20orf133
Epitope Specificity	1-100/448
Isotype	IgG
Purity	affinity purified by Protein A
Buffer	0.01M TBS (pH7.4) with 1% BSA, 0.02% Proclin300 and 50% Glycerol.
SUBCELLULAR LOCATION	Nucleus.
SIMILARITY	Contains 1 Macro domain.
SUBUNIT	Interacts with ADP-ribosylated PARP1.
Important Note	This product as supplied is intended for research use only, not for use in human, therapeutic or diagnostic applications.
Background Descriptions	MACROD2 (MACRO Domain Containing 2) is a Protein Coding gene. Diseases associated with MACROD2 include autism spectrum disorder and pervasive developmental disorder. GO annotations related to this gene include hydrolase activity, acting on glycosyl bonds and deacetylase activity. An important paralog of this gene is MACROD1.

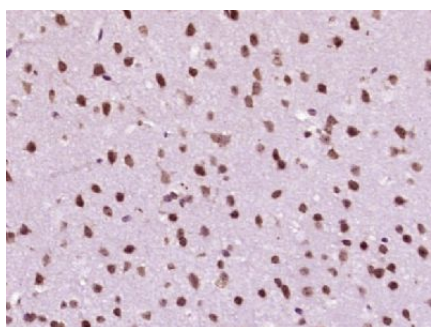
Additional Information

Gene ID	140733
Other Names	ADP-ribose glycohydrolase MACROD2, MACRO domain-containing protein 2, O-acetyl-ADP-ribose deacetylase MACROD2, 3.5.1.-, [Protein ADP-ribosylaspartate] hydrolase MACROD2, 3.2.2.-, [Protein ADP-ribosylglutamate] hydrolase MACROD2, 3.2.2.-, MACROD2 {ECO:0000303 PubMed:23474712, ECO:0000312 HGNC:HGNC:16126}
Dilution	IHC-P=1:100-500,IHC-F=1:100-500,ICC=1:100-500,IF=1:100-500,ELISA=1:5000-10000
Format	0.01M TBS(pH7.4) with 1% BSA, 0.09% (W/V) sodium azide and 50% Glyce
Storage	Store at -20 °C for one year. Avoid repeated freeze/thaw cycles. When reconstituted in sterile pH 7.4 0.01M PBS or diluent of antibody the antibody is stable for at least two weeks at 2-4 °C.

Protein Information

Name	MACROD2 {ECO:0000303 PubMed:23474712, ECO:0000312 HGNC:HGNC:16126}
Function	Removes ADP-ribose from aspartate and glutamate residues in proteins bearing a single ADP-ribose moiety (PubMed: 23474712 , PubMed: 23474714). Inactive towards proteins bearing poly-ADP-ribose (PubMed: 23474712 , PubMed: 23474714). Deacetylates O-acetyl-ADP ribose, a signaling molecule generated by the deacetylation of acetylated lysine residues in histones and other proteins (PubMed: 21257746).
Cellular Location	Nucleus. Note=Recruited to DNA lesions, probably via mono-APD-ribosylated proteins.

Images



Paraformaldehyde-fixed, paraffin embedded (mouse brain tissue); Antigen retrieval by boiling in sodium citrate buffer (pH6.0) for 15min; Block endogenous peroxidase by 3% hydrogen peroxide for 20 minutes; Blocking buffer (normal goat serum) at 37°C for 30min; Antibody incubation with (C20orf133) Polyclonal Antibody, Unconjugated (AP57174) at 1:400 overnight at 4°C, followed by operating according to SP Kit(Rabbit) (sp-0023) instructions and DAB staining.

Please note: All products are 'FOR RESEARCH USE ONLY. NOT FOR USE IN DIAGNOSTIC OR THERAPEUTIC PROCEDURES'.