

LHPL3 Antibody (C-term)

Affinity Purified Rabbit Polyclonal Antibody (Pab)

Catalog # AP5721b

Product Information

Application	WB, E
Primary Accession	Q86UP9
Other Accession	Q9CTN8 , NP_945351.1
Reactivity	Human, Mouse
Host	Rabbit
Clonality	Polyclonal
Isotype	Rabbit IgG
Clone Names	RB27024
Calculated MW	25769
Antigen Region	184-213

Additional Information

Gene ID	375612
Other Names	Lipoma HMGIC fusion partner-like 3 protein, LHFPL3, LHFPL4
Target/Specificity	This LHPL3 antibody is generated from rabbits immunized with a KLH conjugated synthetic peptide between 184-213 amino acids from the C-terminal region of human LHPL3.
Dilution	WB~~1:1000 E~~Use at an assay dependent concentration.
Format	Purified polyclonal antibody supplied in PBS with 0.09% (W/V) sodium azide. This antibody is purified through a protein A column, followed by peptide affinity purification.
Storage	Maintain refrigerated at 2-8°C for up to 2 weeks. For long term storage store at -20°C in small aliquots to prevent freeze-thaw cycles.
Precautions	LHPL3 Antibody (C-term) is for research use only and not for use in diagnostic or therapeutic procedures.

Protein Information

Name	LHFPL3 (HGNC:6589)
Cellular Location	Membrane; Multi-pass membrane protein

Background

LHFPL3 is a member of the lipoma HMGIC fusion partner (LHFP) gene family, which is a subset of the superfamily of tetraspan transmembrane protein encoding genes. Mutations in one LHFP-like gene result in deafness in humans and mice, and a second LHFP-like gene is fused to a high-mobility group gene in a translocation-associated lipoma. A partial gene fragment named LHFPL4 corresponds to a portion of the first exon of this gene.

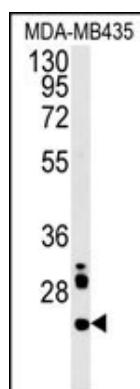
References

Maestrini, E., et al. Mol. Psychiatry (2009) In press :

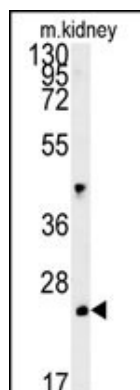
Longo-Guess, C.M., et al. Proc. Natl. Acad. Sci. U.S.A. 102(22):7894-7899(2005)

Petit, M.M., et al. Genomics 57(3):438-441(1999)

Images



LHPL3 Antibody (C-term) (Cat. #AP5721b) western blot analysis in MDA-MB435 cell line lysates (15ug/lane). This demonstrates the LHPL3 antibody detected the LHPL3 protein (arrow).



LHPL3 Antibody (C-term) (Cat. #AP5721b) western blot analysis in mouse kidney tissue lysates (15ug/lane). This demonstrates the LHPL3 antibody detected the LHPL3 protein (arrow).

Please note: All products are 'FOR RESEARCH USE ONLY. NOT FOR USE IN DIAGNOSTIC OR THERAPEUTIC PROCEDURES'.