

METTL11B Rabbit pAb

METTL11B Rabbit pAb

Catalog # AP57260

Product Information

Application	IHC-P, IHC-F, IF
Primary Accession	Q5VY1
Reactivity	Mouse
Predicted	Human, Rat, Dog, Pig, Horse, Rabbit, Sheep, Cat
Host	Rabbit
Clonality	Polyclonal
Calculated MW	32400
Physical State	Liquid
Immunogen	KLH conjugated synthetic peptide derived from human METTL11B
Epitope Specificity	1-100/283
Isotype	IgG
Purity	affinity purified by Protein A
Buffer	0.01M TBS (pH7.4) with 1% BSA, 0.02% Proclin300 and 50% Glycerol.
SUBCELLULAR LOCATION	Nucleus
SIMILARITY	Belongs to the methyltransferase superfamily. NTM1 family.
Important Note	This product as supplied is intended for research use only, not for use in human, therapeutic or diagnostic applications.

Additional Information

Gene ID	149281
Other Names	N-terminal Xaa-Pro-Lys N-methyltransferase 2, 2.1.1.299, Alpha N-terminal protein methyltransferase 1B, Methyltransferase-like protein 11B, X-Pro-Lys N-terminal protein methyltransferase 1B, NTM1B, NTMT2 (HGNC:31932)
Dilution	IHC-P=1:100-500,IHC-F=1:100-500,IF=1:100-500
Storage	Store at -20 °C for one year. Avoid repeated freeze/thaw cycles. When reconstituted in sterile pH 7.4 0.01M PBS or diluent of antibody the antibody is stable for at least two weeks at 2-4 °C.

Protein Information

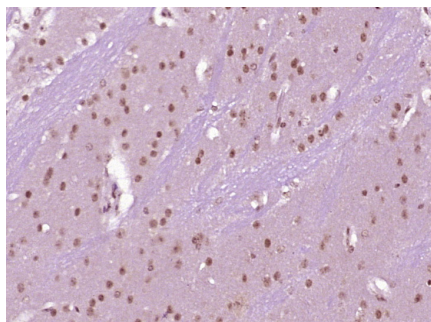
Name	NTMT2 (HGNC:31932)
Function	Alpha N-methyltransferase that methylates the N-terminus of target proteins containing the N-terminal motif [Ala/Pro/Ser]-Pro-Lys when the initiator Met is cleaved. Specifically catalyzes monomethylation of exposed alpha-amino group of Ala or Ser residue in the [Ala/Ser]-Pro-Lys motif and Pro

in the Pro-Pro-Lys motif (PubMed:[24090352](#), PubMed:[30417120](#)). Predominantly functions as a mono- methyltransferase but is also able to di-/tri-methylate the GPKRIA peptide and di-methylate the PPKRIA peptide (in vitro) (PubMed:[30417120](#)). May activate NTMT1 by priming its substrates for trimethylation (PubMed:[24090352](#)).

Cellular Location

Nucleus.

Images



Paraformaldehyde-fixed, paraffin embedded (mouse brain tissue); Antigen retrieval by boiling in sodium citrate buffer (pH6.0) for 15min; Block endogenous peroxidase by 3% hydrogen peroxide for 20 minutes; Blocking buffer (normal goat serum) at 37°C for 30min; Antibody incubation with (METTL11B) Polyclonal Antibody, Unconjugated (AP57260) at 1:400 overnight at 4°C, followed by operating according to SP Kit(Rabbit) (sp-0023) instructions and DAB staining.

Please note: All products are 'FOR RESEARCH USE ONLY. NOT FOR USE IN DIAGNOSTIC OR THERAPEUTIC PROCEDURES'.