

METTL2A Rabbit pAb

METTL2A Rabbit pAb

Catalog # AP57275

Product Information

Application	WB
Primary Accession	Q96IZ6
Reactivity	Human
Host	Rabbit
Clonality	Polyclonal
Calculated MW	43537
Physical State	Liquid
Immunogen	KLH conjugated synthetic peptide derived from human METTL2A
Epitope Specificity	1-100/378
Isotype	IgG
Purity	affinity purified by Protein A
Buffer	0.01M TBS (pH7.4) with 1% BSA, 0.02% Proclin300 and 50% Glycerol.
SIMILARITY	Belongs to the methyltransferase superfamily. METL family.
Important Note	This product as supplied is intended for research use only, not for use in human, therapeutic or diagnostic applications.

Additional Information

Gene ID	339175
Other Names	tRNA N(3)-cytidine methyltransferase METTL2A, 2.1.1.-, Methyltransferase-like protein 2A, METTL2A {ECO:0000303 PubMed:28655767, ECO:0000312 HGNC:HGNC:25755}
Dilution	WB=1:500-2000
Storage	Store at -20 °C for one year. Avoid repeated freeze/thaw cycles. When reconstituted in sterile pH 7.4 0.01M PBS or diluent of antibody the antibody is stable for at least two weeks at 2-4 °C.

Protein Information

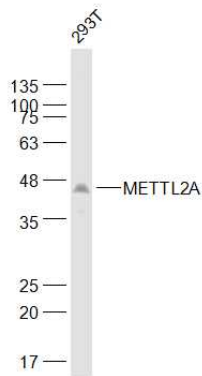
Name	METTL2A {ECO:0000303 PubMed:28655767, ECO:0000312 HGNC:HGNC:25755}
Function	S-adenosyl-L-methionine-dependent methyltransferase that mediates N(3)-methylcytidine modification of residue 32 of the tRNA anticodon loop of tRNA(Thr)(UGU) and tRNA(Arg)(CCU) (PubMed: 28655767 , PubMed: 34268557). N(3)-methylcytidine methylation by METTL2A requires the N6-threonylcarbamoylation of tRNA (t6A37) by the EKC/KEOPS complex as

prerequisite (PubMed:[34268557](#)).

Cellular Location

Cytoplasm.

Images



Sample:

293T(Human) Cell Lysate at 30 ug

Primary: Anti-METTL2A (AP57275) at 1/1000 dilution

Secondary: IRDye800CW Goat Anti-Rabbit IgG at 1/20000 dilution

Predicted band size: 44 kD

Observed band size: 44 kD

Please note: All products are 'FOR RESEARCH USE ONLY. NOT FOR USE IN DIAGNOSTIC OR THERAPEUTIC PROCEDURES'.