

CCYL1 Antibody (N-term)

Affinity Purified Rabbit Polyclonal Antibody (Pab)

Catalog # AP5730a

Product Information

Application	WB, IHC-P, E
Primary Accession	Q8N7R7
Other Accession	NP_001135772.1
Reactivity	Human, Hamster
Host	Rabbit
Clonality	Polyclonal
Isotype	Rabbit IgG
Clone Names	RB27113
Calculated MW	40705
Antigen Region	41-70

Additional Information

Gene ID	151195
Other Names	Cyclin-Y-like protein 1, CCNYL1
Target/Specificity	This CCYL1 antibody is generated from rabbits immunized with a KLH conjugated synthetic peptide between 41-70 amino acids from the N-terminal region of human CCYL1.
Dilution	WB~~1:1000 IHC-P~~1:100~500 E~~Use at an assay dependent concentration.
Format	Purified polyclonal antibody supplied in PBS with 0.09% (W/V) sodium azide. This antibody is purified through a protein A column, followed by peptide affinity purification.
Storage	Maintain refrigerated at 2-8°C for up to 2 weeks. For long term storage store at -20°C in small aliquots to prevent freeze-thaw cycles.
Precautions	CCYL1 Antibody (N-term) is for research use only and not for use in diagnostic or therapeutic procedures.

Protein Information

Name	CCNYL1 (HGNC:26868)
Function	Key regulator of Wnt signaling implicated in various biological processes including male fertility, embryonic neurogenesis and cortex development. Activates the cyclin-dependent kinase CDK16, and promotes sperm maturation.

Background

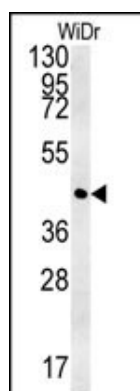
CCNYL1 belongs to the cyclin family, Cyclin Y subfamily and contains 1 cyclin N terminal domain. The specific function of CCNYL1 is not yet known.

References

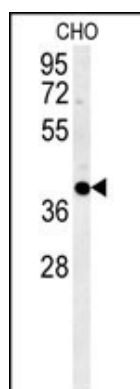
Oh, J.H., et al. Mamm. Genome 16(12):942-954(2005)

Beausoleil, S.A., et al. Proc. Natl. Acad. Sci. U.S.A. 101(33):12130-12135(2004)

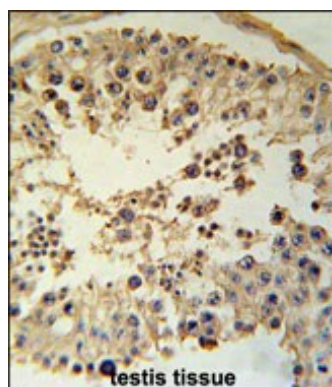
Images



CCYL1 Antibody (N-term) (Cat. #AP5730a) western blot analysis in WiDr cell line lysates (35ug/lane). This demonstrates the CCYL1 antibody detected the CCYL1 protein (arrow).



CCYL1 Antibody (N-term) (Cat. #AP5730a) western blot analysis in CHO cell line lysates (35ug/lane). This demonstrates the CCYL1 antibody detected the CCYL1 protein (arrow).



CCYL1 Antibody (N-term) (Cat. #AP5730a) immunohistochemistry analysis in formalin fixed and paraffin embedded human testis tissue followed by peroxidase conjugation of the secondary antibody and DAB staining. This data demonstrates the use of the CCYL1 Antibody (N-term) for immunohistochemistry. Clinical relevance has not been evaluated.