

# LDHD Antibody (N-term)

Affinity Purified Rabbit Polyclonal Antibody (Pab)

Catalog # AP5733a

## Product Information

---

<b>Application</b>	WB, IHC-P, FC, E
<b>Primary Accession</b>	<a href="#">Q86WU2</a>
<b>Other Accession</b>	<a href="#">NP_705690.2</a>
<b>Reactivity</b>	Human
<b>Host</b>	Rabbit
<b>Clonality</b>	Polyclonal
<b>Isotype</b>	Rabbit IgG
<b>Clone Names</b>	RB27170
<b>Calculated MW</b>	54871
<b>Antigen Region</b>	35-62

## Additional Information

---

<b>Gene ID</b>	197257
<b>Other Names</b>	Probable D-lactate dehydrogenase, mitochondrial, DLD, Lactate dehydrogenase D, LDHD ( <a href="#">HGNC:19708</a> )
<b>Target/Specificity</b>	This LDHD antibody is generated from rabbits immunized with a KLH conjugated synthetic peptide between 35-62 amino acids from the N-terminal region of human LDHD.
<b>Dilution</b>	WB~~1:1000 IHC-P~~1:100~500 FC~~1:10~50 E~~Use at an assay dependent concentration.
<b>Format</b>	Purified polyclonal antibody supplied in PBS with 0.09% (W/V) sodium azide. This antibody is purified through a protein A column, followed by peptide affinity purification.
<b>Storage</b>	Maintain refrigerated at 2-8°C for up to 2 weeks. For long term storage store at -20°C in small aliquots to prevent freeze-thaw cycles.
<b>Precautions</b>	LDHD Antibody (N-term) is for research use only and not for use in diagnostic or therapeutic procedures.

## Protein Information

---

<b>Name</b>	LDHD ( <a href="#">HGNC:19708</a> )
<b>Function</b>	Involved in D-lactate, but not L-lactate catabolic process.

<b>Cellular Location</b>	Mitochondrion {ECO:0000250   UniProtKB:Q7TNG8}.
<b>Tissue Location</b>	Expressed moderately in heart and liver and at lower levels in skeletal muscle and kidney

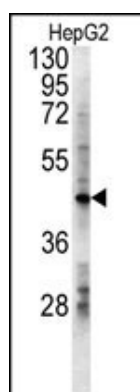
## Background

LDHD belongs to the D-isomer specific 2-hydroxyacid dehydrogenase family. The similar protein in yeast has both D-lactate and D-glycerate dehydrogenase activities. Alternative splicing occurs at this locus and two transcript variants encoding distinct isoforms have been identified. [provided by RefSeq].

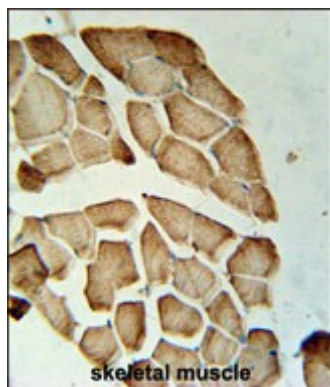
## References

Dastani, Z., et al. Eur. J. Hum. Genet. (2009) In press :  
 Flick, M.J., et al. Biochem. Biophys. Res. Commun. 295(4):910-916(2002)

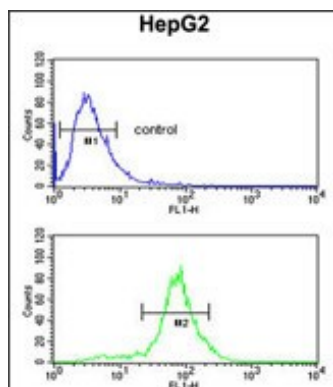
## Images



LDHD Antibody (N-term) (Cat. #AP5733a) western blot analysis in HepG2 cell line lysates (15ug/lane). This demonstrates the LDHD antibody detected the LDHD protein (arrow).



LDHD Antibody (N-term) (Cat. #AP5733a) immunohistochemistry analysis in formalin fixed and paraffin embedded human skeletal muscle followed by peroxidase conjugation of the secondary antibody and DAB staining. This data demonstrates the use of the LDHD Antibody (N-term) for immunohistochemistry. Clinical relevance has not been evaluated.



LDHD Antibody (N-term) (Cat. #AP5733a) flow cytometric analysis of HepG2 cells (bottom histogram) compared to a negative control cell (top histogram). FITC-conjugated goat-anti-rabbit secondary antibodies were used for the analysis.

Please note: All products are 'FOR RESEARCH USE ONLY. NOT FOR USE IN DIAGNOSTIC OR THERAPEUTIC PROCEDURES'.