

Naked1 Rabbit pAb

Naked1 Rabbit pAb

Catalog # AP57349

Product Information

Application	WB
Primary Accession	Q969G9
Reactivity	Mouse
Predicted	Human, Rat, Dog, Horse
Host	Rabbit
Clonality	Polyclonal
Calculated MW	52285
Physical State	Liquid
Immunogen	KLH conjugated synthetic peptide derived from human Naked1
Epitope Specificity	301-400/470
Isotype	IgG
Purity	affinity purified by Protein A
Buffer	0.01M TBS (pH7.4) with 1% BSA, 0.02% Proclin300 and 50% Glycerol.
SUBCELLULAR LOCATION	Cell membrane By similarity. Cytoplasm
SIMILARITY	Belongs to the NKD family. Contains 1 EF-hand domain.
SUBUNIT	Interacts with DVL1, DVL2, DVL3 and PPP2R3A.
Important Note	This product as supplied is intended for research use only, not for use in human, therapeutic or diagnostic applications.
Background Descriptions	In the mouse, Nkd is a Dishevelled (see DVL1; MIM 601365)-binding protein that functions as a negative regulator of the Wnt (see WNT1; MIM 164820)-beta-catenin (see MIM 116806)-Tcf (see MIM 602272) signaling pathway.[supplied by OMIM, Jun 2003]

Additional Information

Gene ID	85407
Other Names	Protein naked cuticle homolog 1, Naked-1, hNkd, hNkd1, NKD1, NKD
Target/Specificity	Expressed in colon, heart, kidney, leukocyte, liver, lung, ovary, pancreas, placenta, prostate, skeletal muscle, small intestine and spleen.
Dilution	WB=1:500-2000
Storage	Store at -20 °C for one year. Avoid repeated freeze/thaw cycles. When reconstituted in sterile pH 7.4 0.01M PBS or diluent of antibody the antibody is stable for at least two weeks at 2-4 °C.

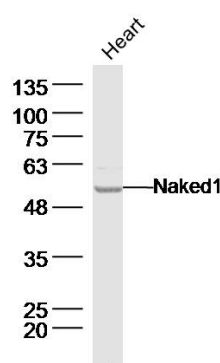
Protein Information

Name	NKD1
Synonyms	NKD
Function	Cell autonomous antagonist of the canonical Wnt signaling pathway. May activate a second Wnt signaling pathway that controls planar cell polarity.
Cellular Location	Cell membrane. Cytoplasm
Tissue Location	Expressed in colon, heart, kidney, leukocyte, liver, lung, ovary, pancreas, placenta, prostate, skeletal muscle, small intestine and spleen.

Background

In the mouse, Nkd is a Dishevelled (see DVL1; MIM 601365)-binding protein that functions as a negative regulator of the Wnt (see WNT1; MIM 164820)-beta-catenin (see MIM 116806)-Tcf (see MIM 602272) signaling pathway.[supplied by OMIM, Jun 2003]

Images



Sample: Heart (Mouse) Lysate at 40 ug
 Primary: Anti-Naked1 (AP57349) at 1/300 dilution
 Secondary: IRDye800CW Goat Anti-Rabbit IgG at 1/20000 dilution
 Predicted band size: 52 kD
 Observed band size: 52 kD

Please note: All products are 'FOR RESEARCH USE ONLY. NOT FOR USE IN DIAGNOSTIC OR THERAPEUTIC PROCEDURES'.