

NAP1L5 Rabbit pAb

NAP1L5 Rabbit pAb

Catalog # AP57356

Product Information

Application	IHC-P, IHC-F, IF
Primary Accession	Q96NT1
Reactivity	Mouse, Rat
Predicted	Human, Dog, Pig, Horse, Sheep
Host	Rabbit
Clonality	Polyclonal
Calculated MW	19593
Physical State	Liquid
Immunogen	KLH conjugated synthetic peptide derived from human NAP1L5
Epitope Specificity	51-132/132
Isotype	IgG
Purity	affinity purified by Protein A
Buffer	0.01M TBS (pH7.4) with 1% BSA, 0.02% Proclin300 and 50% Glycerol.
SUBCELLULAR LOCATION	Nucleus.
SIMILARITY	Belongs to the nucleosome assembly protein (NAP) family.
Important Note	This product as supplied is intended for research use only, not for use in human, therapeutic or diagnostic applications.

Additional Information

Gene ID	266812
Other Names	Nucleosome assembly protein 1-like 5, Down-regulated in liver malignancy, NAP1L5, DRLM
Target/Specificity	Predominantly expressed in brain.
Dilution	IHC-P=1:100-500,IHC-F=1:100-500,IF=1:100-500
Storage	Store at -20 °C for one year. Avoid repeated freeze/thaw cycles. When reconstituted in sterile pH 7.4 0.01M PBS or diluent of antibody the antibody is stable for at least two weeks at 2-4 °C.

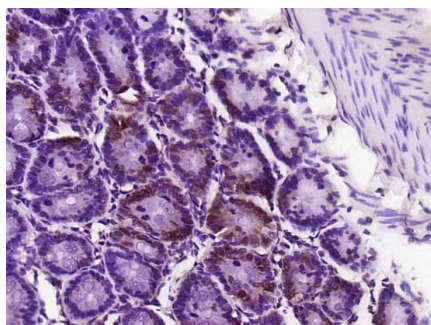
Protein Information

Name	NAP1L5
Synonyms	DRLM
Cellular Location	Nucleus.

Tissue Location

Predominantly expressed in brain.

Images



Paraformaldehyde-fixed, paraffin embedded (Rat colon); Antigen retrieval by boiling in sodium citrate buffer (pH6.0) for 15min; Block endogenous peroxidase by 3% hydrogen peroxide for 20 minutes; Blocking buffer (normal goat serum) at 37°C for 30min; Antibody incubation with (NAP1L5) Polyclonal Antibody, Unconjugated (AP57356) at 1:500 overnight at 4°C, followed by a conjugated secondary (sp-0023) for 20 minutes and DAB staining.

Please note: All products are 'FOR RESEARCH USE ONLY. NOT FOR USE IN DIAGNOSTIC OR THERAPEUTIC PROCEDURES'.