

NC2 alpha Polyclonal Antibody

Purified Rabbit Polyclonal Antibody (Pab)

Catalog # AP57368

Product Information

Application	WB, IHC-P, IHC-F, IF, ICC, E
Primary Accession	Q14919
Reactivity	Rat, Pig, Dog, Bovine
Host	Rabbit
Clonality	Polyclonal
Calculated MW	22350

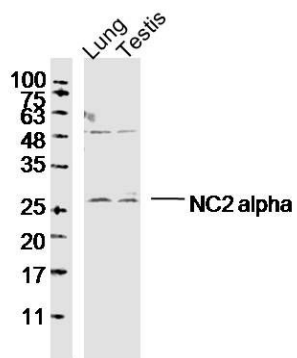
Additional Information

Gene ID	10589
Other Names	Dr1-associated corepressor, Dr1-associated protein 1, Negative cofactor 2-alpha, NC2-alpha, DRAP1
Dilution	WB=1:500-2000,IHC-P=1:100-500,IHC-F=1:100-500,ICC=1:100-500,IF=1:100-500,ELISA=1:5000-10000
Format	0.01M TBS(pH7.4) with 1% BSA, 0.09% (W/V) sodium azide and 50% Glyce
Storage	Store at -20 °C for one year. Avoid repeated freeze/thaw cycles. When reconstituted in sterile pH 7.4 0.01M PBS or diluent of antibody the antibody is stable for at least two weeks at 2-4 °C.

Protein Information

Name	DRAP1
Function	The association of the DR1/DRAP1 heterodimer with TBP results in a functional repression of both activated and basal transcription of class II genes. This interaction precludes the formation of a transcription-competent complex by inhibiting the association of TFIIA and/or TFIIB with TBP. Can bind to DNA on its own.
Cellular Location	Nucleus.
Tissue Location	Ubiquitous. Highly expressed in adult testis, heart, skeletal muscle, pancreas and brain, and in fetal brain, liver and kidney.

Images



Sample:

Lung (Mouse) Lysate at 40 ug

Testis (Mouse) Lysate at 40 ug

Primary: Anti- NC2 alpha (AP57368) at 1/300 dilution

Secondary: IRDye800CW Goat Anti-Rabbit IgG at 1/20000 dilution

Predicted band size: 22kD

Observed band size: 26kD

Please note: All products are 'FOR RESEARCH USE ONLY. NOT FOR USE IN DIAGNOSTIC OR THERAPEUTIC PROCEDURES'.