

MXRA5 Polyclonal Antibody

Purified Rabbit Polyclonal Antibody (Pab)

Catalog # AP57399

Product Information

Application	IHC-P, IHC-F, IF, ICC, E
Primary Accession	Q9NR99
Reactivity	Human
Host	Rabbit
Clonality	Polyclonal
Calculated MW	312150
Physical State	Liquid
Immunogen	KLH conjugated synthetic peptide derived from human MXRA5
Epitope Specificity	1261-1360/2828
Isotype	IgG
Purity	affinity purified by Protein A
Buffer	0.01M TBS (pH7.4) with 1% BSA, 0.02% Proclin300 and 50% Glycerol.
SUBCELLULAR LOCATION	Secreted
Important Note	This product as supplied is intended for research use only, not for use in human, therapeutic or diagnostic applications.
Background Descriptions	This gene encodes one of the matrix-remodelling associated proteins. This protein contains 7 leucine-rich repeats and 12 immunoglobulin-like C2-type domains related to perlecan. This gene has a pseudogene on chromosome Y.

Additional Information

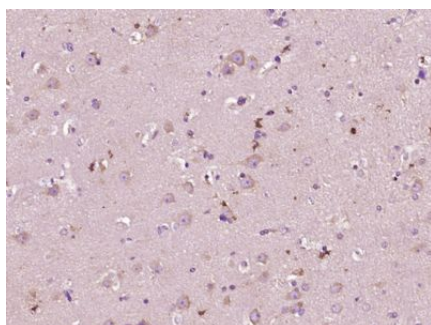
Gene ID	25878
Other Names	Matrix-remodeling-associated protein 5, Adhesion protein with leucine-rich repeats and immunoglobulin domains related to perlecan, Adlican, MXRA5
Dilution	IHC-P=1:100-500,IHC-F=1:100-500,ICC=1:100-500,IF=1:100-500,ELISA=1:5000-10000
Format	0.01M TBS(pH7.4) with 1% BSA, 0.09% (W/V) sodium azide and 50% Glyce
Storage	Store at -20 °C for one year. Avoid repeated freeze/thaw cycles. When reconstituted in sterile pH 7.4 0.01M PBS or diluent of antibody the antibody is stable for at least two weeks at 2-4 °C.

Protein Information

Name	MXRA5
-------------	-------

Function	In kidney, has anti-inflammatory and anti-fibrotic properties by limiting the induction of chemokines, fibronectin and collagen expression in response to TGB1 and pro-inflammatory stimuli.
Cellular Location	Secreted
Tissue Location	Detected in placenta (at protein level) (PubMed:32337544). Detected in cerebrospinal fluid and fibroblasts (at protein level) (PubMed:25326458, PubMed:36213313). Highly expressed in kidney, also detected on liver and spleen (PubMed:27599751). Expressed by proximal tubular cells of the kidney (at protein level) (PubMed:27599751). Expression highly increases during chronic kidney disease and autosomal dominant polycystic kidney disease, where is detected in cysts (PubMed:27599751).

Images



Paraformaldehyde-fixed, paraffin embedded (Human brain glioma); Antigen retrieval by boiling in sodium citrate buffer (pH6.0) for 15min; Block endogenous peroxidase by 3% hydrogen peroxide for 20 minutes; Blocking buffer (normal goat serum) at 37°C for 30min; Antibody incubation with (MXRA5) Polyclonal Antibody, Unconjugated (AP57399) at 1:400 overnight at 4°C, followed by operating according to SP Kit(Rabbit) (sp-0023) instructions and DAB staining.

Please note: All products are 'FOR RESEARCH USE ONLY. NOT FOR USE IN DIAGNOSTIC OR THERAPEUTIC PROCEDURES'.