

MXRA7 Polyclonal Antibody

Purified Rabbit Polyclonal Antibody (Pab)

Catalog # AP57400

Product Information

Application	WB, IHC-P, IHC-F, IF, ICC
Primary Accession	P84157
Reactivity	Human, Mouse, Sheep
Host	Rabbit
Clonality	Polyclonal
Calculated MW	21466
Physical State	Liquid
Immunogen	KLH conjugated synthetic peptide derived from human MXRA7
Epitope Specificity	121-204/204
Isotype	IgG
Purity	affinity purified by Protein A
Buffer	0.01M TBS (pH7.4) with 1% BSA, 0.02% Proclin300 and 50% Glycerol.
SUBCELLULAR LOCATION	Membrane.
Important Note	This product as supplied is intended for research use only, not for use in human, therapeutic or diagnostic applications.

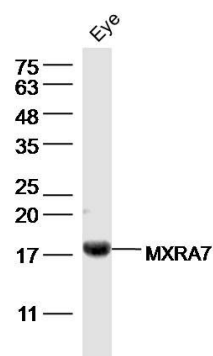
Additional Information

Gene ID	439921
Other Names	Matrix-remodeling-associated protein 7, MXRA7
Dilution	WB=1:500-2000,IHC-P=1:100-500,IHC-F=1:100-500,ICC=1:100-500,IF=1:100-500
Format	0.01M TBS(pH7.4) with 1% BSA, 0.09% (W/V) sodium azide and 50% Glyce
Storage	Store at -20 °C for one year. Avoid repeated freeze/thaw cycles. When reconstituted in sterile pH 7.4 0.01M PBS or diluent of antibody the antibody is stable for at least two weeks at 2-4 °C.

Protein Information

Name	MXRA7
Cellular Location	Membrane; Single-pass membrane protein

Images



Sample: Eye (Mouse) Lysate at 40 ug
Primary: Anti-MXRA7 (AP57400) at 1/300 dilution
Secondary: IRDye800CW Goat Anti-Rabbit IgG at 1/20000 dilution
Predicted band size: 21 kD
Observed band size: 18 kD

Please note: All products are 'FOR RESEARCH USE ONLY. NOT FOR USE IN DIAGNOSTIC OR THERAPEUTIC PROCEDURES'.