

Prolyl Endopeptidase Polyclonal Antibody

Purified Rabbit Polyclonal Antibody (Pab)

Catalog # AP57432

Product Information

Application	WB, IHC-P, IHC-F, IF, ICC, E
Primary Accession	P48147
Reactivity	Rat, Bovine
Host	Rabbit
Clonality	Polyclonal
Calculated MW	80700
Physical State	Liquid
Immunogen	KLH conjugated synthetic peptide derived from human Prolyl Endopeptidase
Epitope Specificity	141-240/710
Isotype	IgG
Purity	affinity purified by Protein A
Buffer	0.01M TBS (pH7.4) with 1% BSA, 0.02% Proclin300 and 50% Glycerol.
SIMILARITY	Belongs to the peptidase S9A family.
Post-translational modifications	The N-terminus is blocked.
Important Note	This product as supplied is intended for research use only, not for use in human, therapeutic or diagnostic applications.
Background Descriptions	The protein encoded by this gene is a cytosolic prolyl endopeptidase that cleaves peptide bonds on the C-terminal side of prolyl residues within peptides that are up to approximately 30 amino acids long. Prolyl endopeptidases have been reported to be involved in the maturation and degradation of peptide hormones and neuropeptides. [provided by RefSeq, Jul 2008]

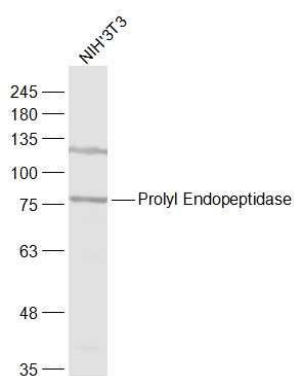
Additional Information

Gene ID	5550
Other Names	Prolyl endopeptidase, PE, 3.4.21.26, Post-proline cleaving enzyme, PREP, PEP
Target/Specificity	Cytoplasm.
Dilution	WB=1:500-2000,IHC-P=1:100-500,IHC-F=1:100-500,ICC=1:100-500,IF=1:100-500,ELISA=1:5000-10000
Format	0.01M TBS(pH7.4) with 1% BSA, 0.09% (W/V) sodium azide and 50% Glyce
Storage	Store at -20 °C for one year. Avoid repeated freeze/thaw cycles. When reconstituted in sterile pH 7.4 0.01M PBS or diluent of antibody the antibody is stable for at least two weeks at 2-4 °C.

Protein Information

Name	PREP
Synonyms	PEP
Function	Cleaves peptide bonds on the C-terminal side of prolyl residues within peptides that are up to approximately 30 amino acids long.
Cellular Location	Cytoplasm.

Images



Sample:

NIH/3T3(Mouse) Cell Lysate at 30 ug

Primary: Anti-Prolyl Endopeptidase (AP57432) at 1/1000 dilution

Secondary: IRDye800CW Goat Anti-Rabbit IgG at 1/20000 dilution

Predicted band size: 81 kD

Observed band size: 81 kD

Please note: All products are 'FOR RESEARCH USE ONLY. NOT FOR USE IN DIAGNOSTIC OR THERAPEUTIC PROCEDURES'.