

NMES1 Polyclonal Antibody

Purified Rabbit Polyclonal Antibody (Pab)

Catalog # AP57465

Product Information

Application	IHC-P, IHC-F, IF, ICC, E
Primary Accession	Q9C002
Reactivity	Rat
Host	Rabbit
Clonality	Polyclonal
Calculated MW	9617
Physical State	Liquid
Immunogen	KLH conjugated synthetic peptide derived from human NMES1
Epitope Specificity	31-83/83
Isotype	IgG
Purity	affinity purified by Protein A
Buffer	0.01M TBS (pH7.4) with 1% BSA, 0.02% Proclin300 and 50% Glycerol.
SUBCELLULAR LOCATION	Nucleus.
SIMILARITY	Belongs to the complex I NDUFA4 subunit family.
Important Note	This product as supplied is intended for research use only, not for use in human, therapeutic or diagnostic applications.
Background Descriptions	This gene was first identified in a study of human esophageal squamous cell carcinoma tissues. Levels of both the message and protein are reduced in carcinoma samples. In adult human tissues, this gene is expressed in the the esophagus, stomach, small intestine, colon and placenta. Alternatively spliced transcript variants that encode the same protein have been identified. [provided by RefSeq, Jun 2012]

Additional Information

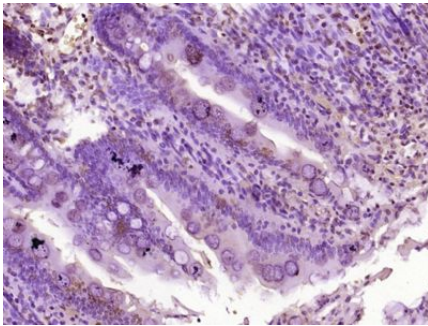
Gene ID	84419
Other Names	Normal mucosa of esophagus-specific gene 1 protein, Protein FOAP-11, NMES1, C15orf48
Target/Specificity	Expressed mainly in stomach, placenta, small intestine and colon, as well as in normal mucosa of esophagus. Down-regulated in esophageal squamous cell carcinoma.
Dilution	IHC-P=1:100-500,IHC-F=1:100-500,ICC=1:100-500,IF=1:100-500,ELISA=1:5000-10000
Format	0.01M TBS(pH7.4) with 1% BSA, 0.09% (W/V) sodium azide and 50% Glyce
Storage	Store at -20 °C for one year. Avoid repeated freeze/thaw cycles. When reconstituted in sterile pH 7.4 0.01M PBS or diluent of antibody the antibody

is stable for at least two weeks at 2-4 °C.

Protein Information

Name	NMES1
Synonyms	C15orf48
Cellular Location	Nucleus.
Tissue Location	Expressed mainly in stomach, placenta, small intestine and colon, as well as in normal mucosa of esophagus. Down- regulated in esophageal squamous cell carcinoma

Images



Paraformaldehyde-fixed, paraffin embedded (Rat intestine); Antigen retrieval by boiling in sodium citrate buffer (pH6.0) for 15min; Block endogenous peroxidase by 3% hydrogen peroxide for 20 minutes; Blocking buffer (normal goat serum) at 37°C for 30min; Antibody incubation with (NMES1) Polyclonal Antibody, Unconjugated (AP57465) at 1:400 overnight at 4°C, followed by operating according to SP Kit(Rabbit) (sp-0023) instructions and DAB staining.

Please note: All products are 'FOR RESEARCH USE ONLY. NOT FOR USE IN DIAGNOSTIC OR THERAPEUTIC PROCEDURES'.